

Strolia

Libellula Electric Upright Bass 41" (beta)

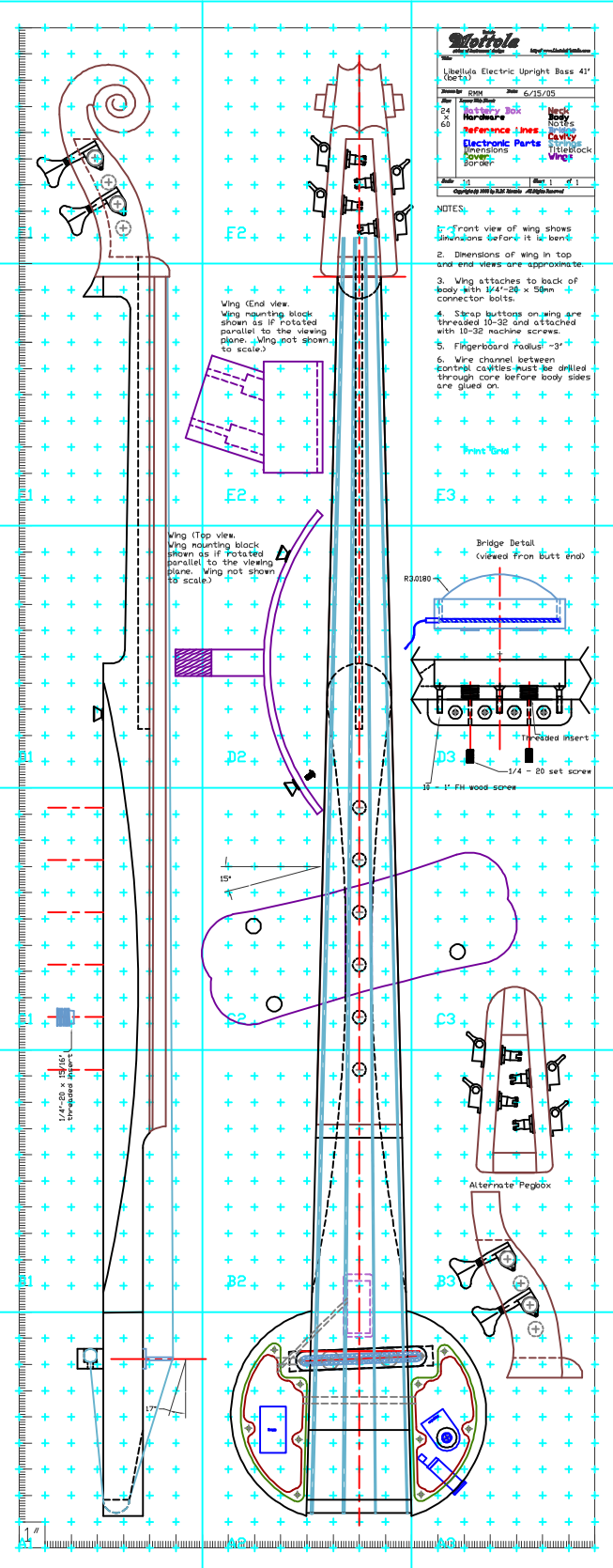
Sheet	001	Date	6/15/05
Rev	1	Author	Bob
24	Hardware	Body	Notes
60	Reference Lines	Cavity	Truss
	Electronic Parts	Wirelock	Wing
	Dimensions	Scale	Border

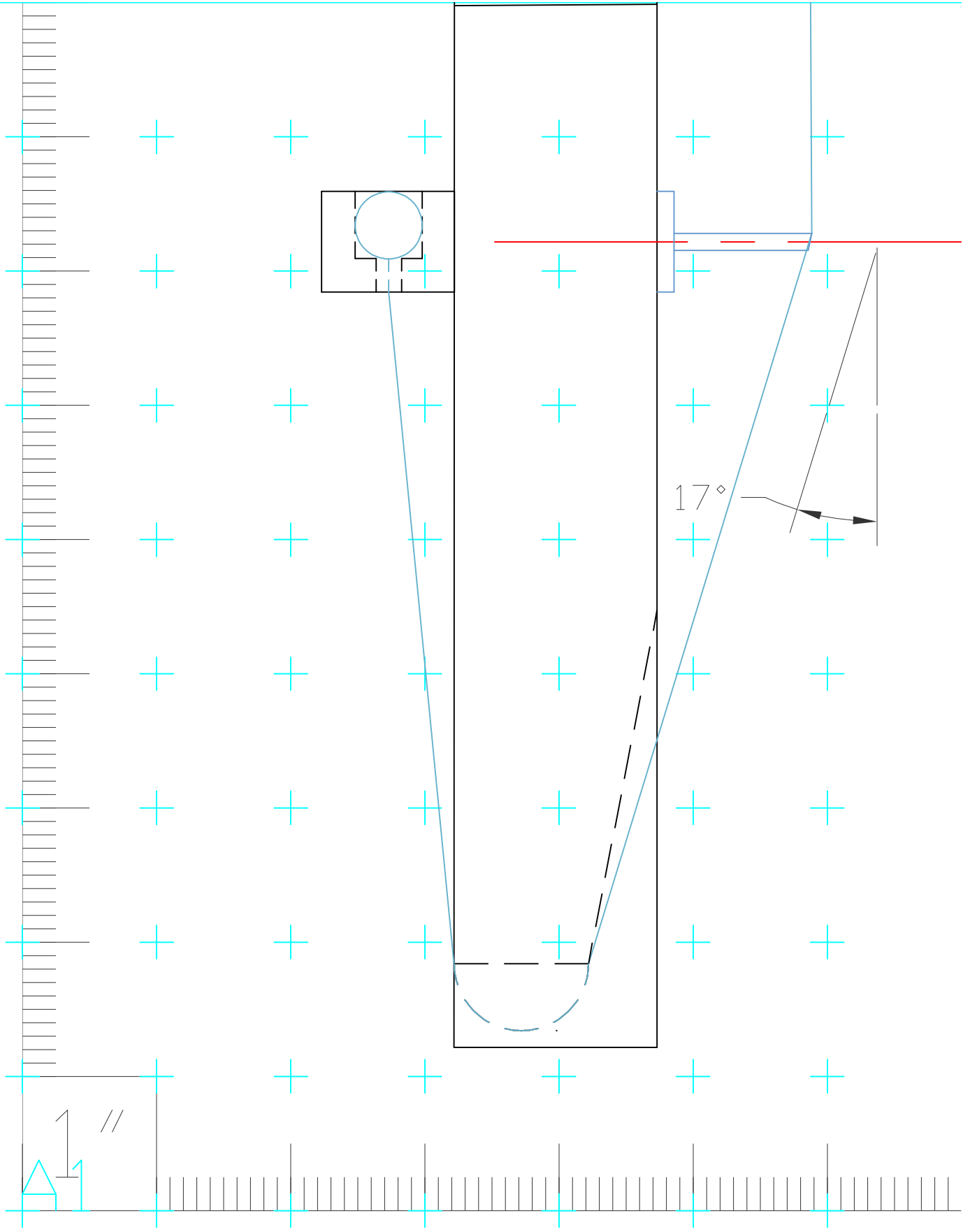
NOTES:

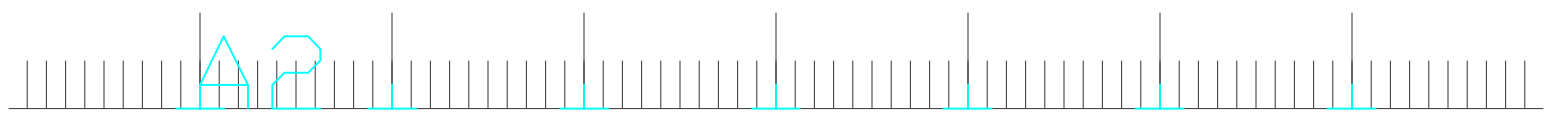
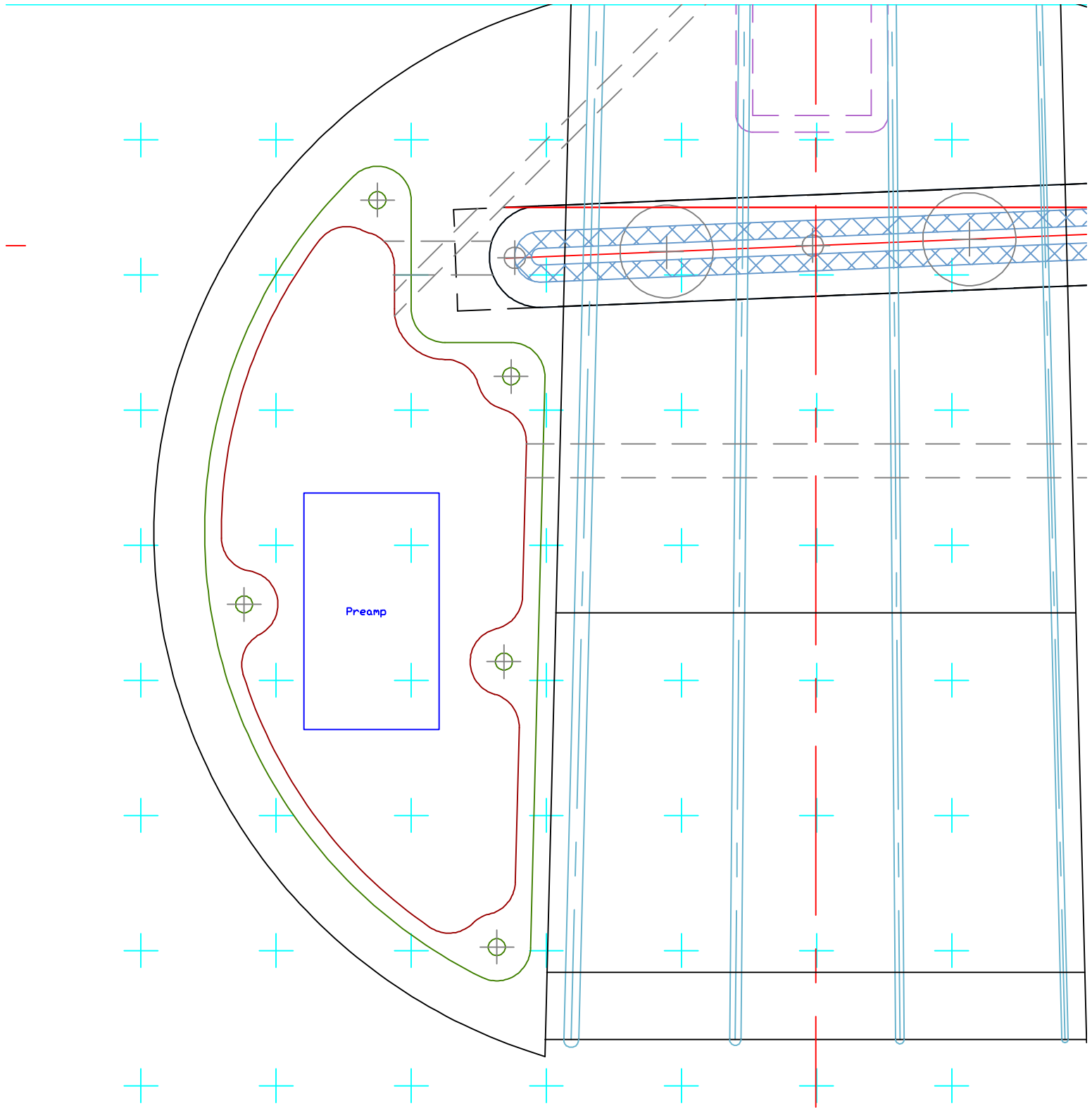
1. Front view of wing shows dimensions before it is bent.
2. Dimensions of wing in top and end views are approximate.
3. Wing attaches to back of body with #4-20 x 50mm connector bolts.
4. Strap buttons on wing are threaded 10-32 and attached with 10-32 machine screws.
5. Fingerboard Radius - 3"
6. Wire channel between control cavities must be drilled through core before body sides are glued on.

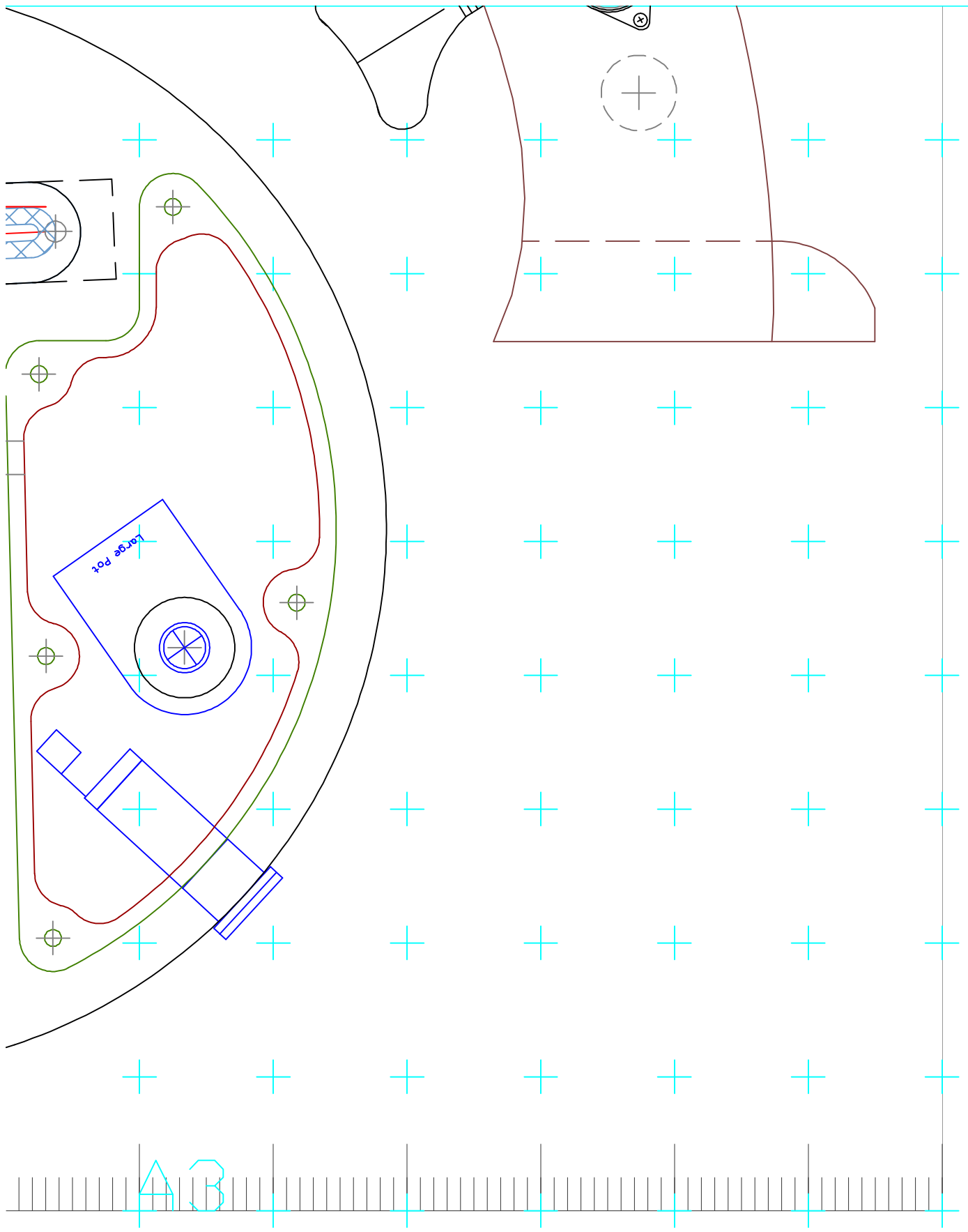
Print Area

E3

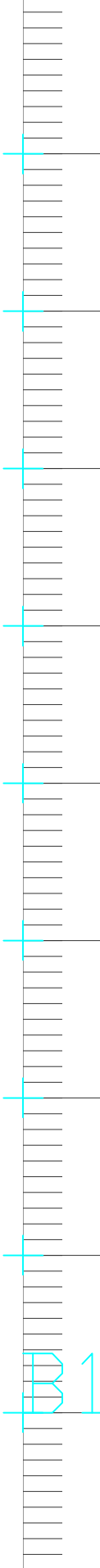








501

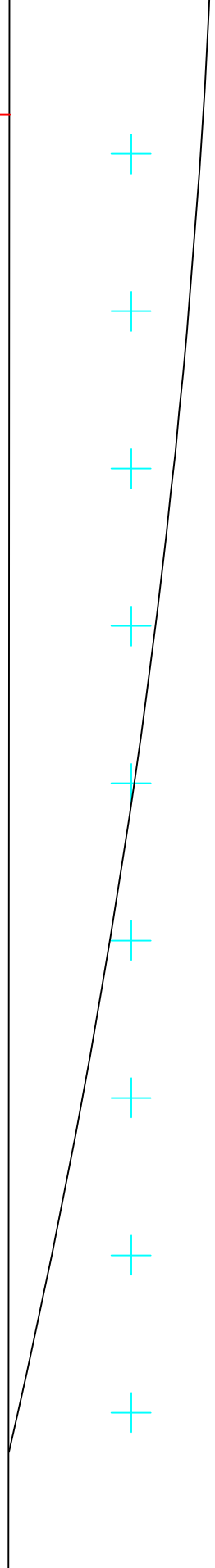


+

1/4"-20 x 15/16"
threaded insert

+

+

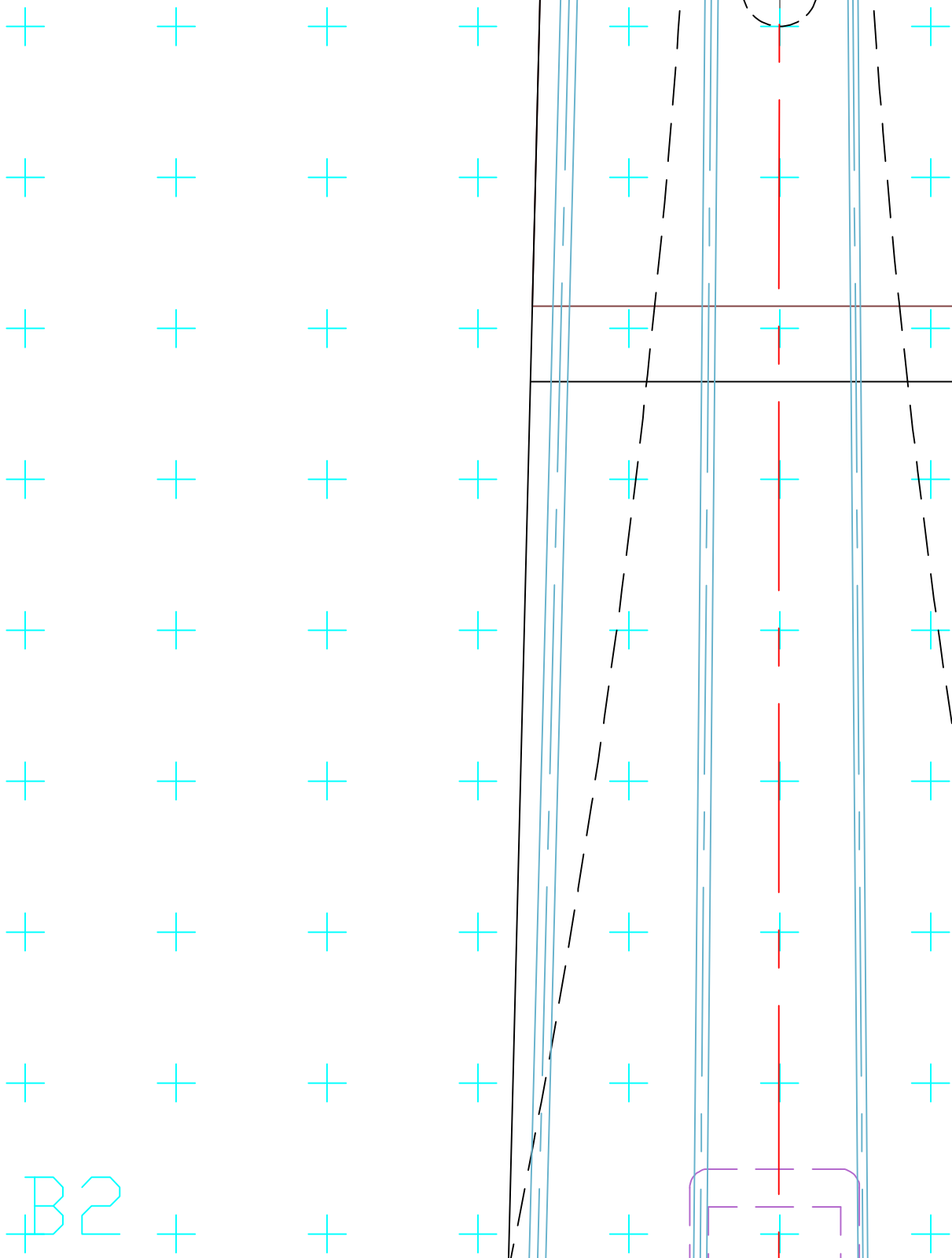


+

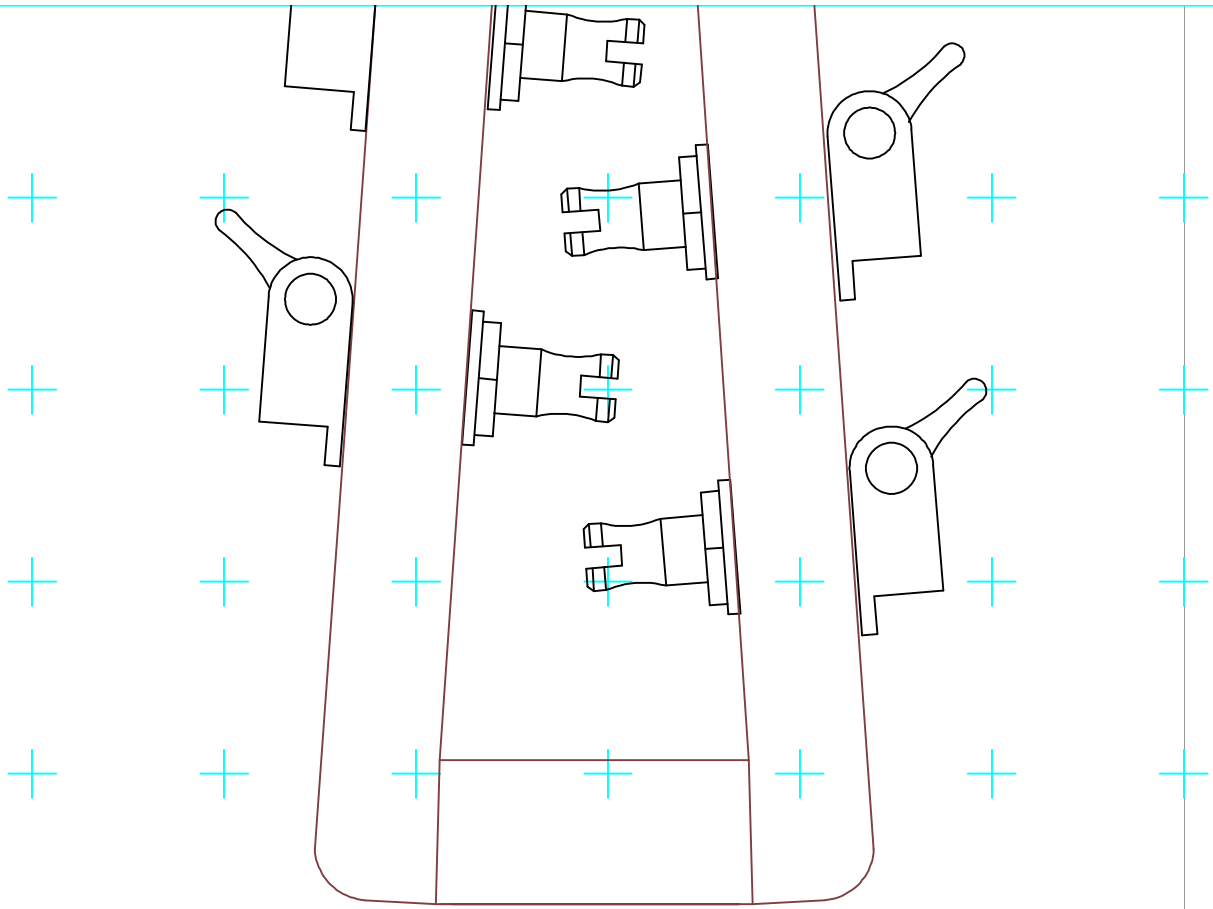


+

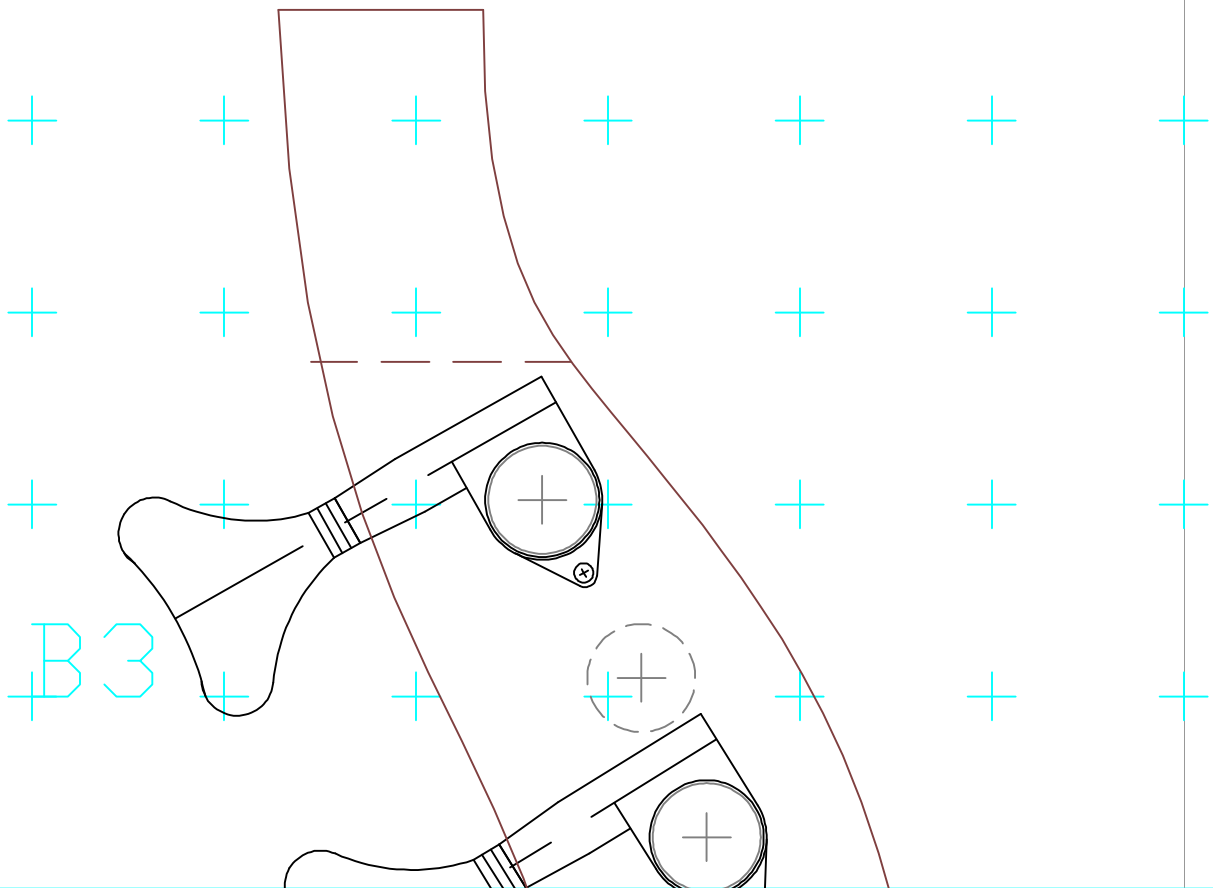
+



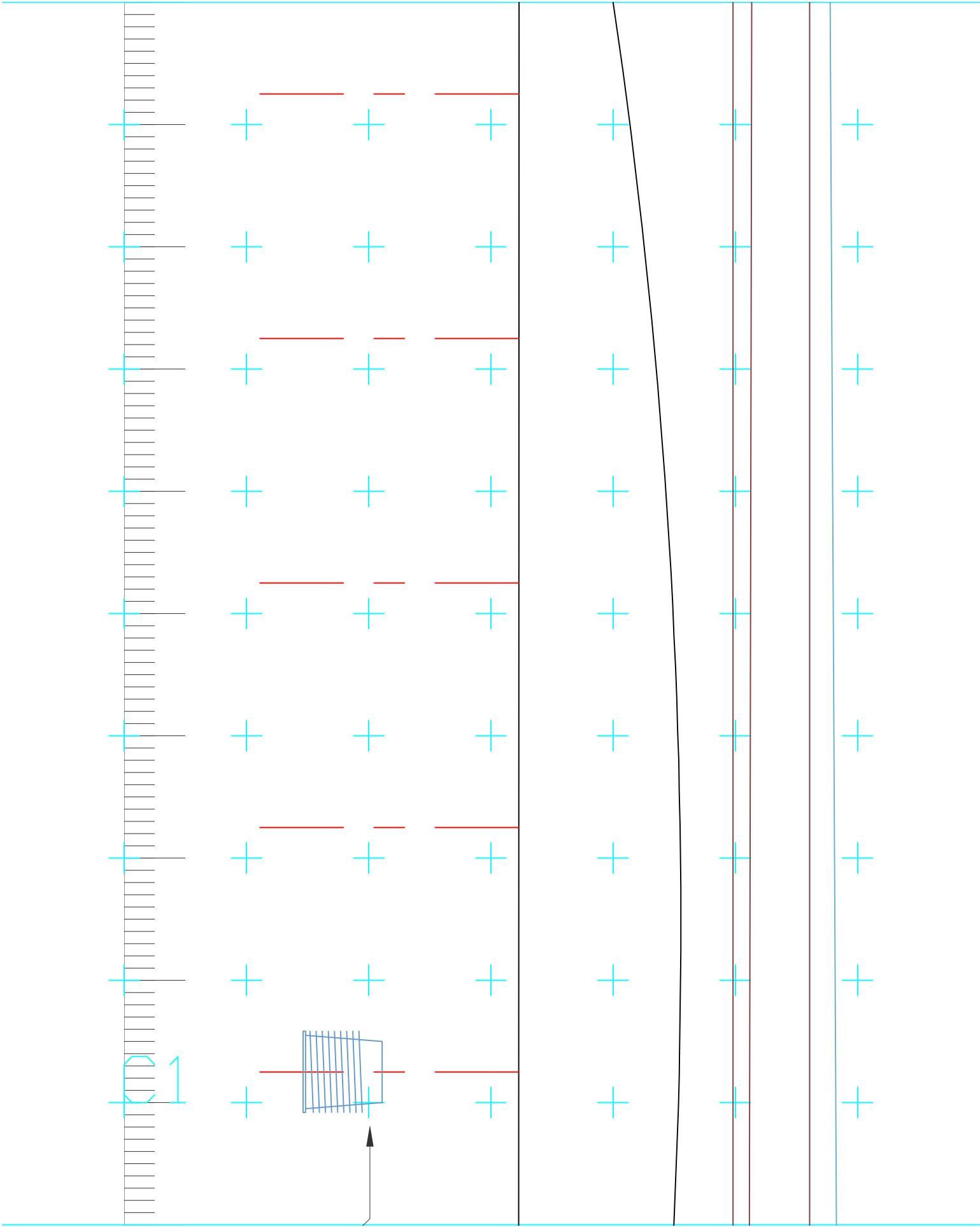
B2

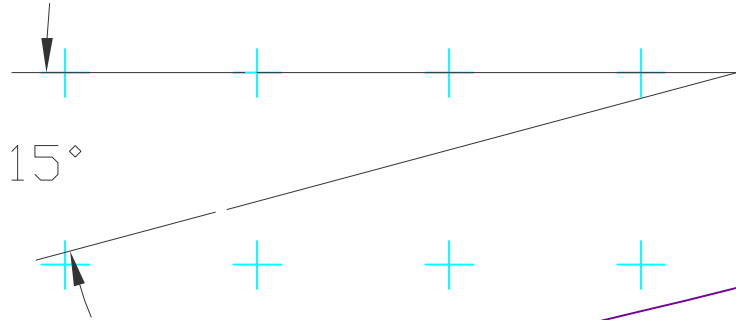
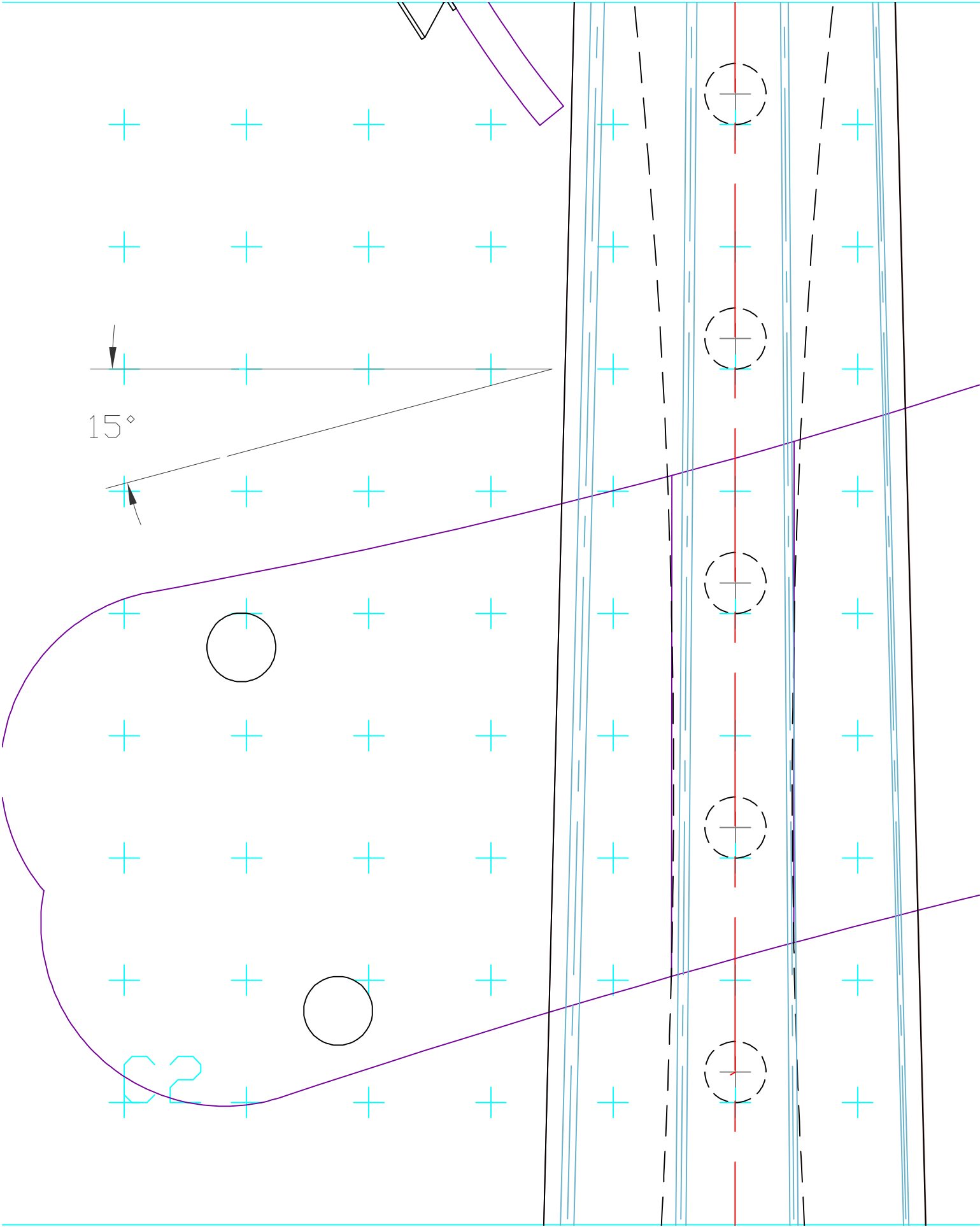


Alternate Pegbox

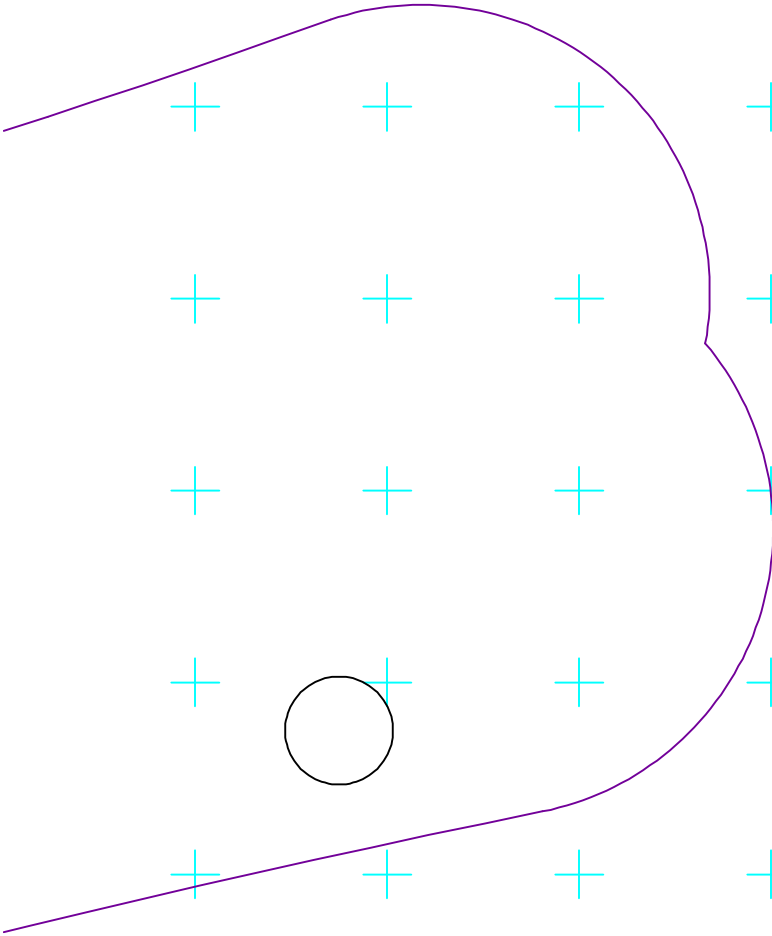


B3

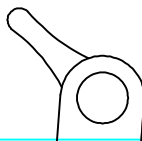
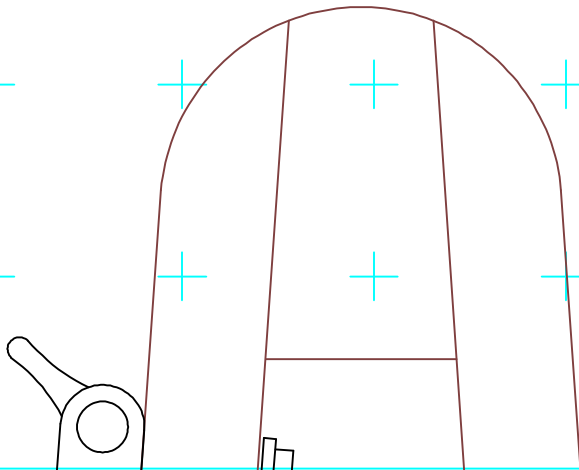


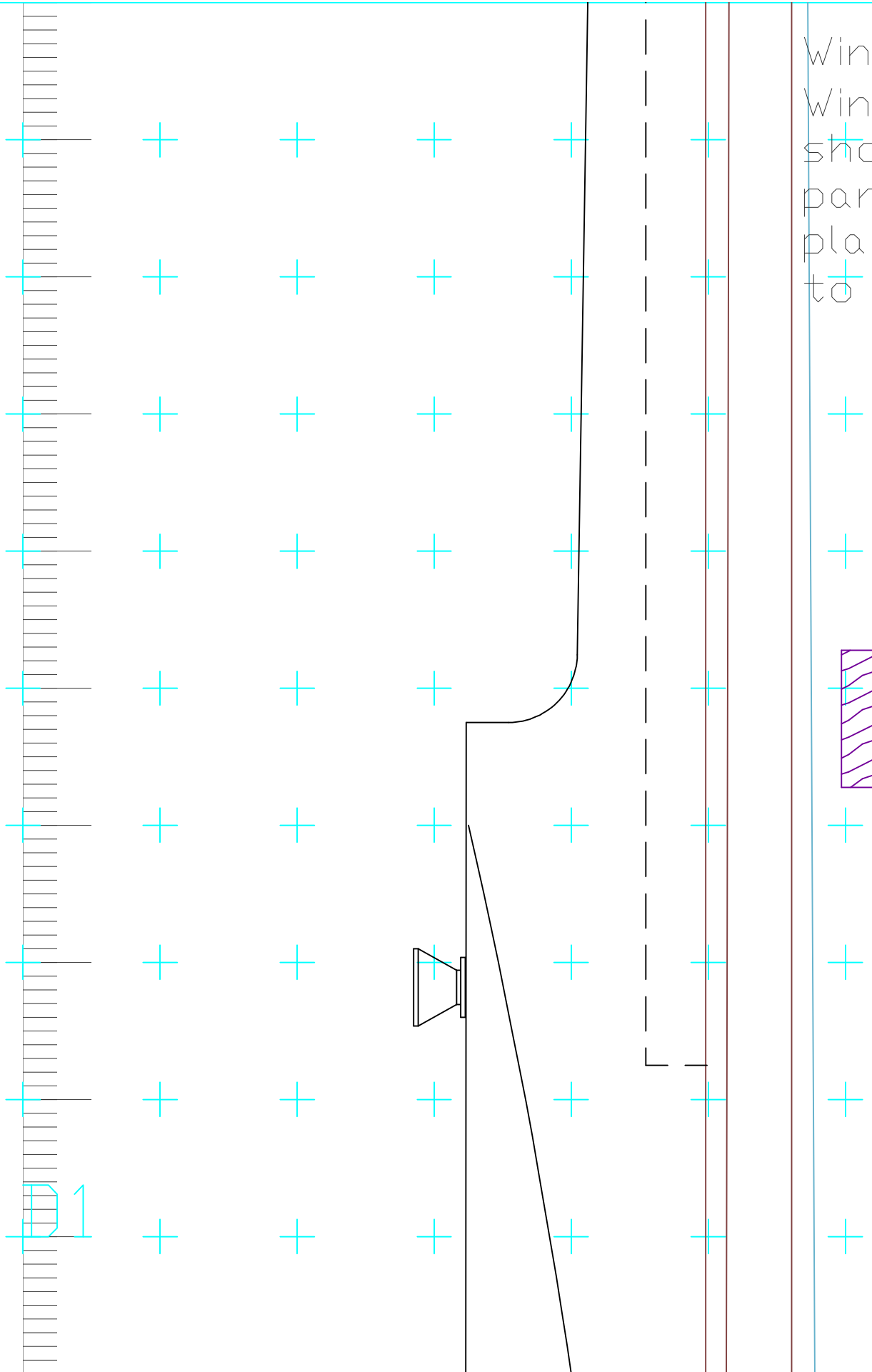


C2

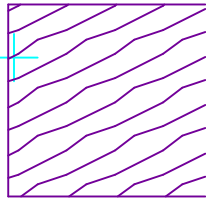


C3





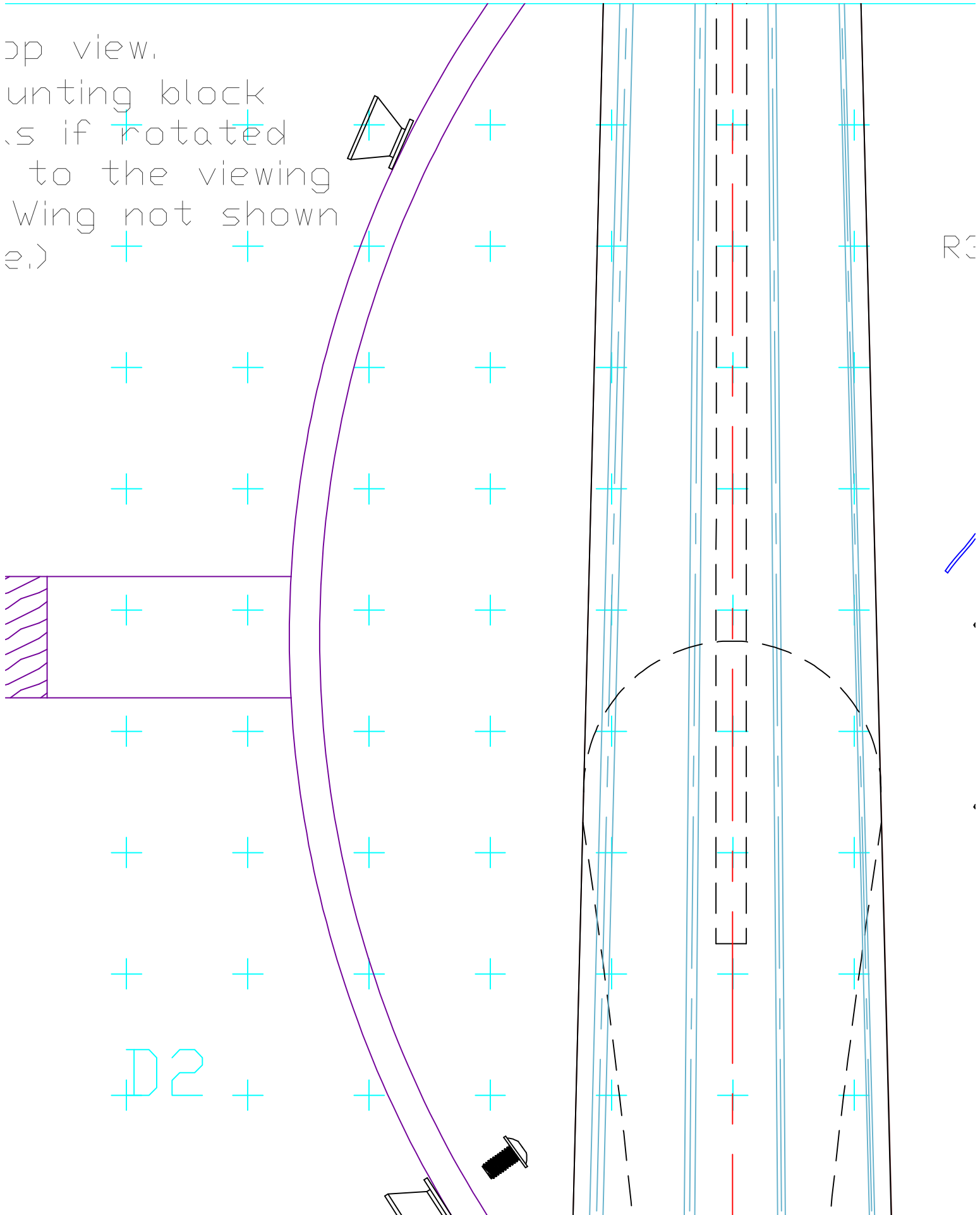
Wing (To
 Wing mo
 shown c
 parallel
 plane.
 to scal



01

top view.

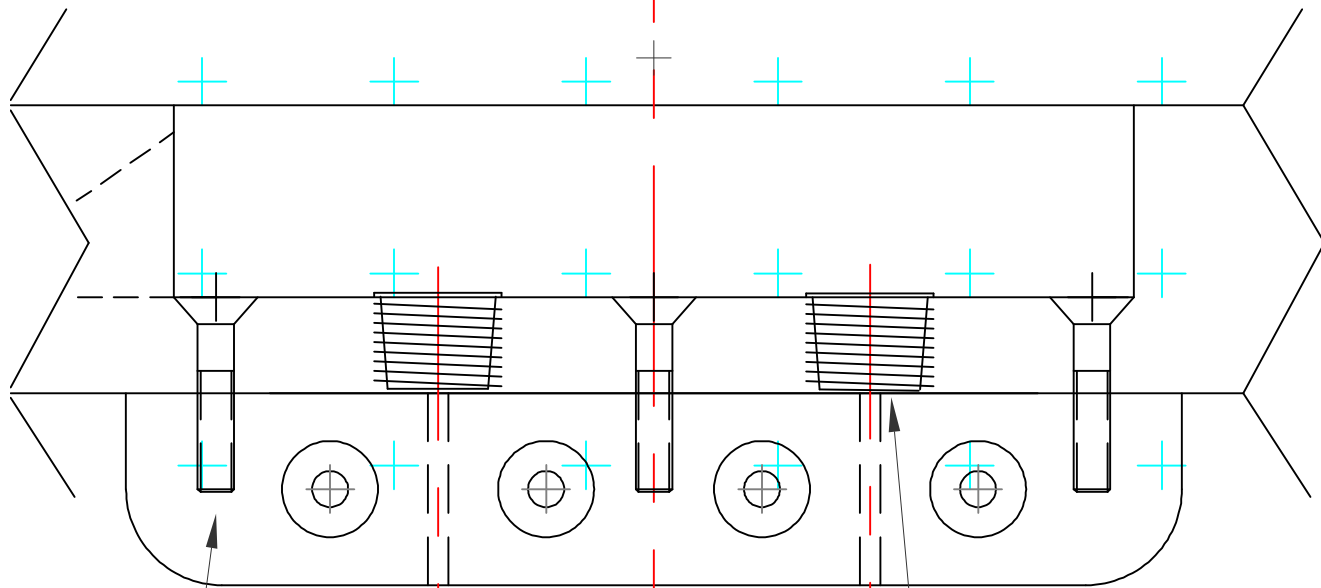
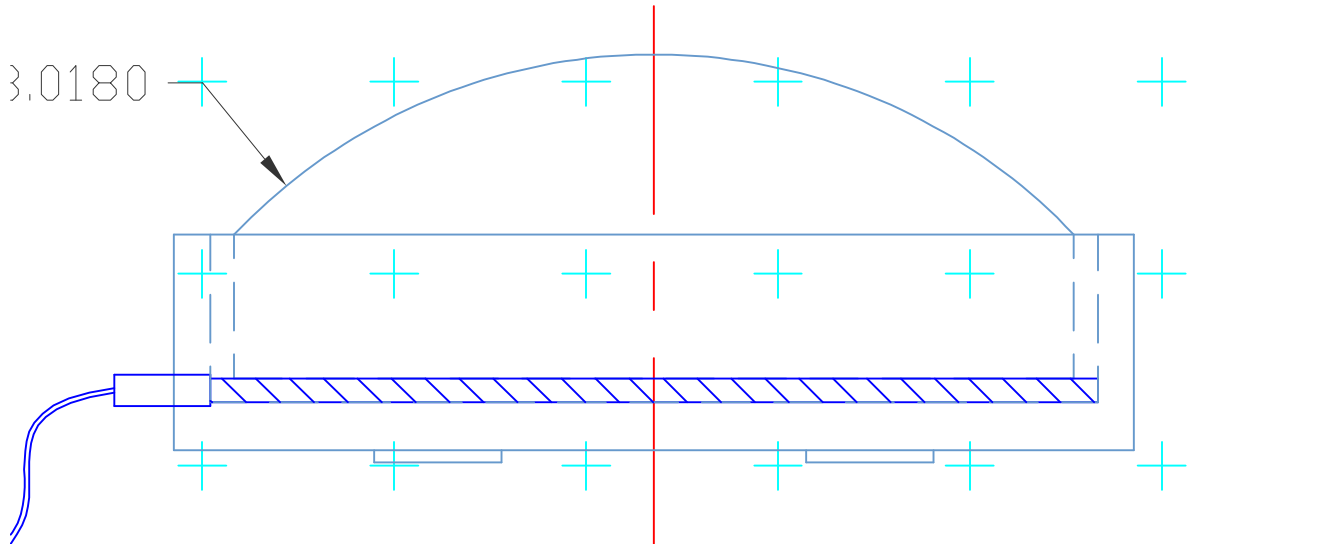
cutting block
is if rotated
to the viewing
Wing not shown
e.)



Bridge Detail

(viewed from butt end)

3.0180

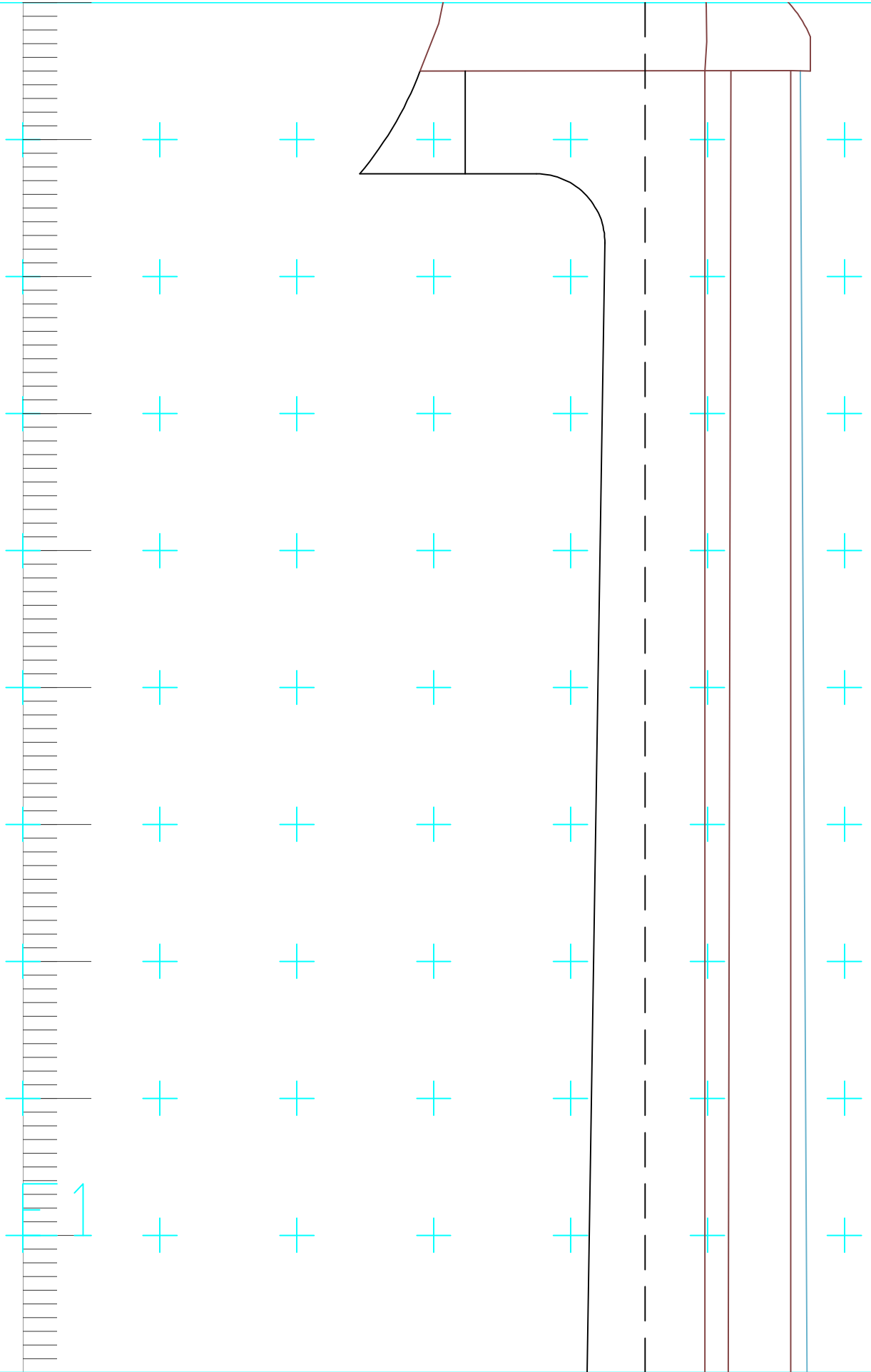


Threaded insert

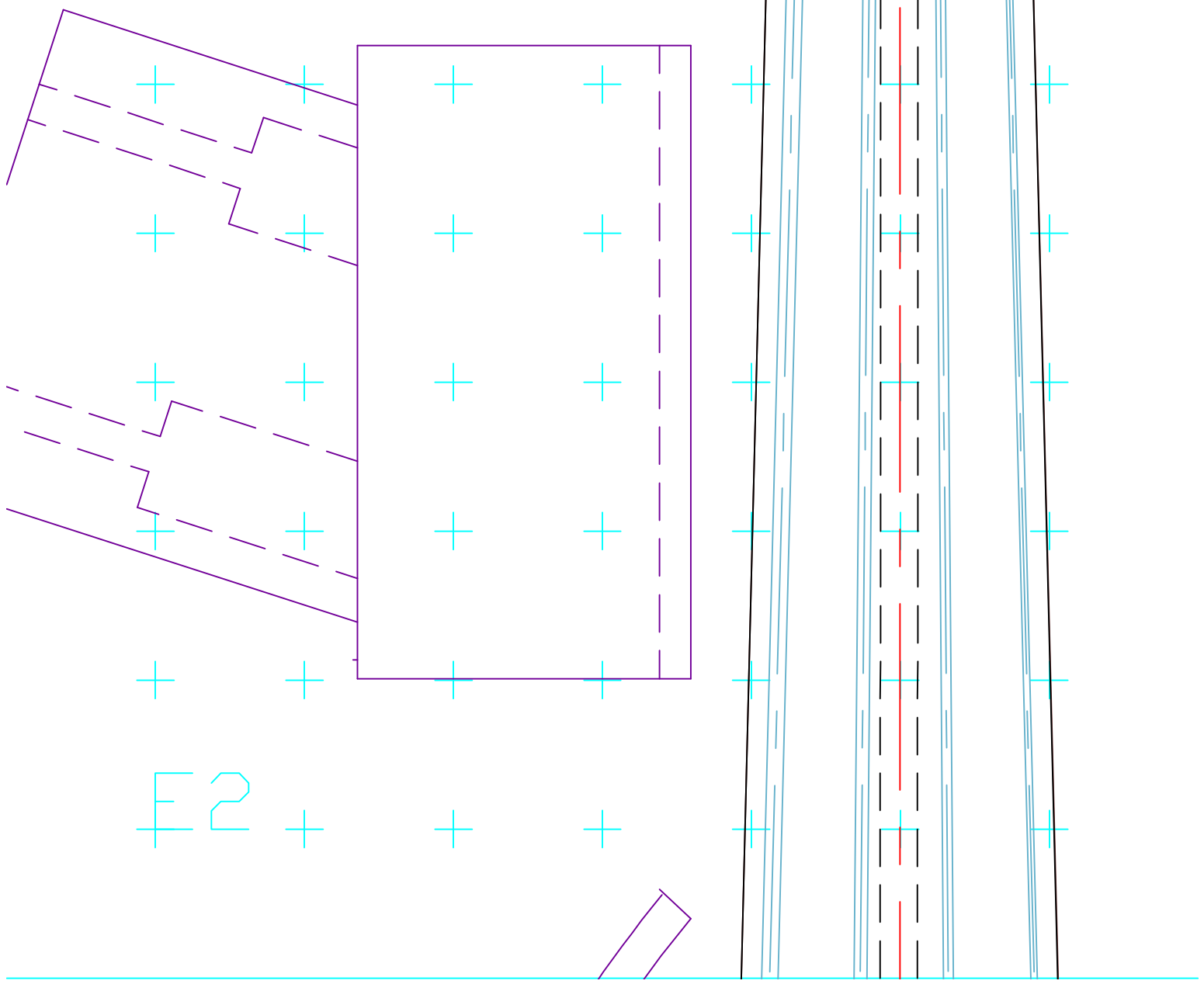
D3

1/4 - 20 set screw

10 - 1" FH wood screw



Wing (End view,
Wing mounting block
shown as if rotated
parallel to the viewing
plane. +Wing not shown
to scale.)



F2

and end views are approximate.

3. Wing attaches to back of body with 1/4"-20 x 50mm connector bolts.

4. Strap buttons on wing are threaded 10-32 and attached with 10-32 machine screws.

5. Fingerboard radius: ~3"

6. Wire channel between control cavities must be drilled through core before body sides are glued on.

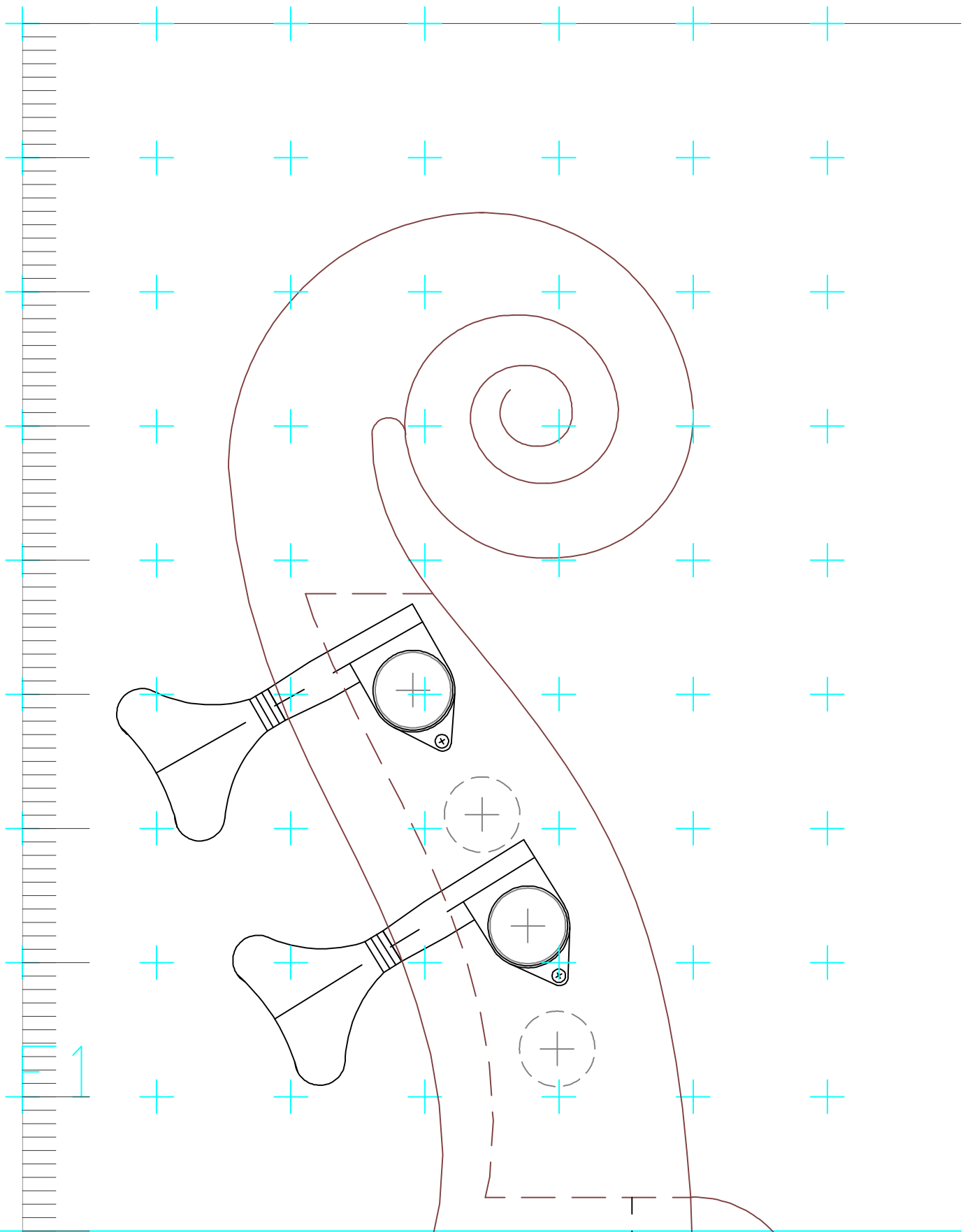
+ + + + + + +

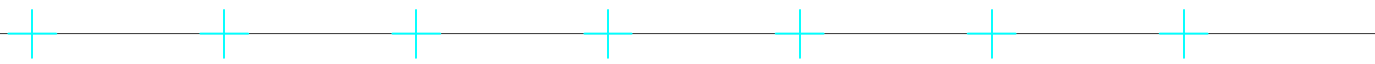
+ + + + + + +

+ Print Grid + + + + +

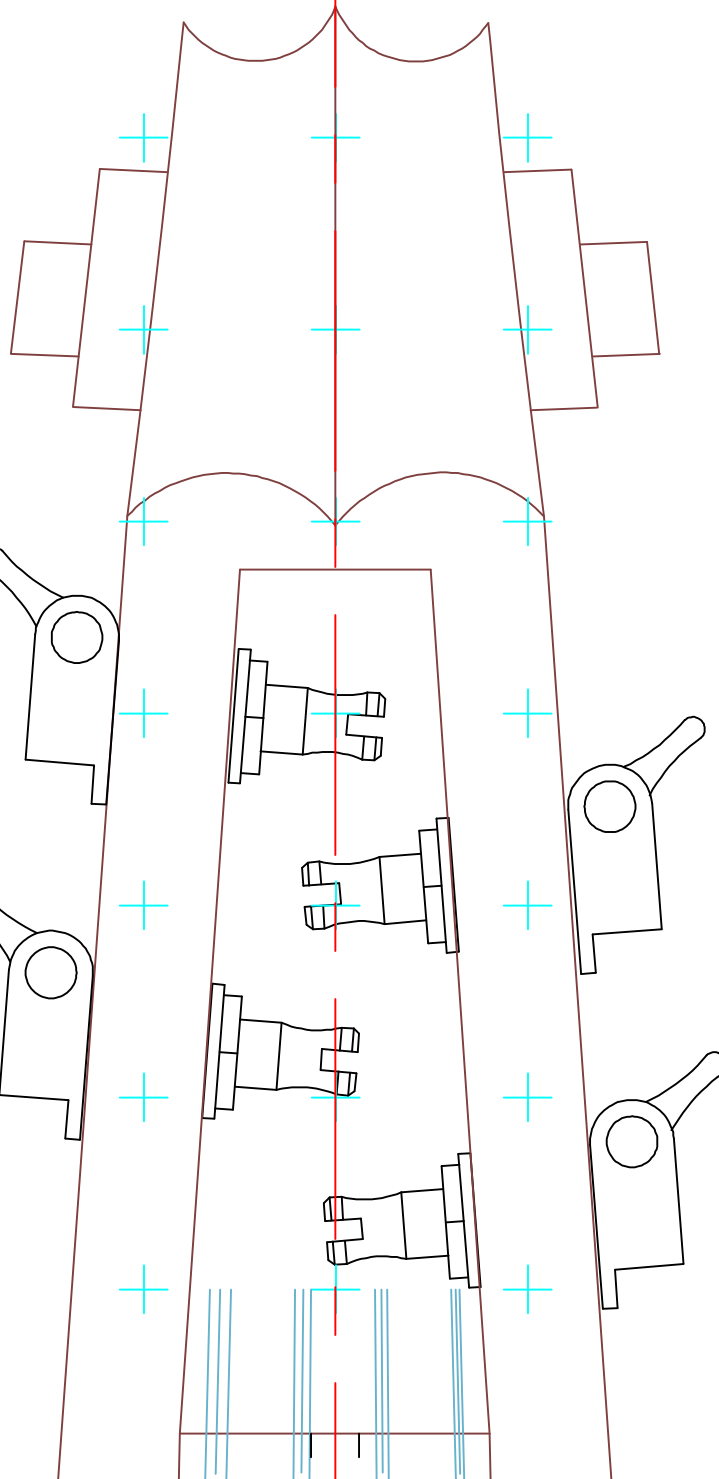
+ + + + + + +

E3 + + + + + + +





F2



liutaio
Mottola
 stringed instrument design

<http://www.LiutaioMottola.com>

Title:

Libellula Electric Upright Bass 41"
 (beta)

Drawn by:

RMM

Date:

6/15/05

Size:

24
 ×
 60

Layers This Sheet:

Battery Box
 Hardware

Reference Lines

Electronic Parts
 Dimensions

Cover
 Border

Neck
 Body

Notes

Bridge

Cavity

Strings

Titleblock

Wings

Scale:

1:1

Sheet

1

of

1

Copyright (c) 2005 by R.M. Mottola All Rights Reserved

NOTES

1. Front view of wing shows dimensions before it is bent.

2. Dimensions of wing in top and end views are approximate