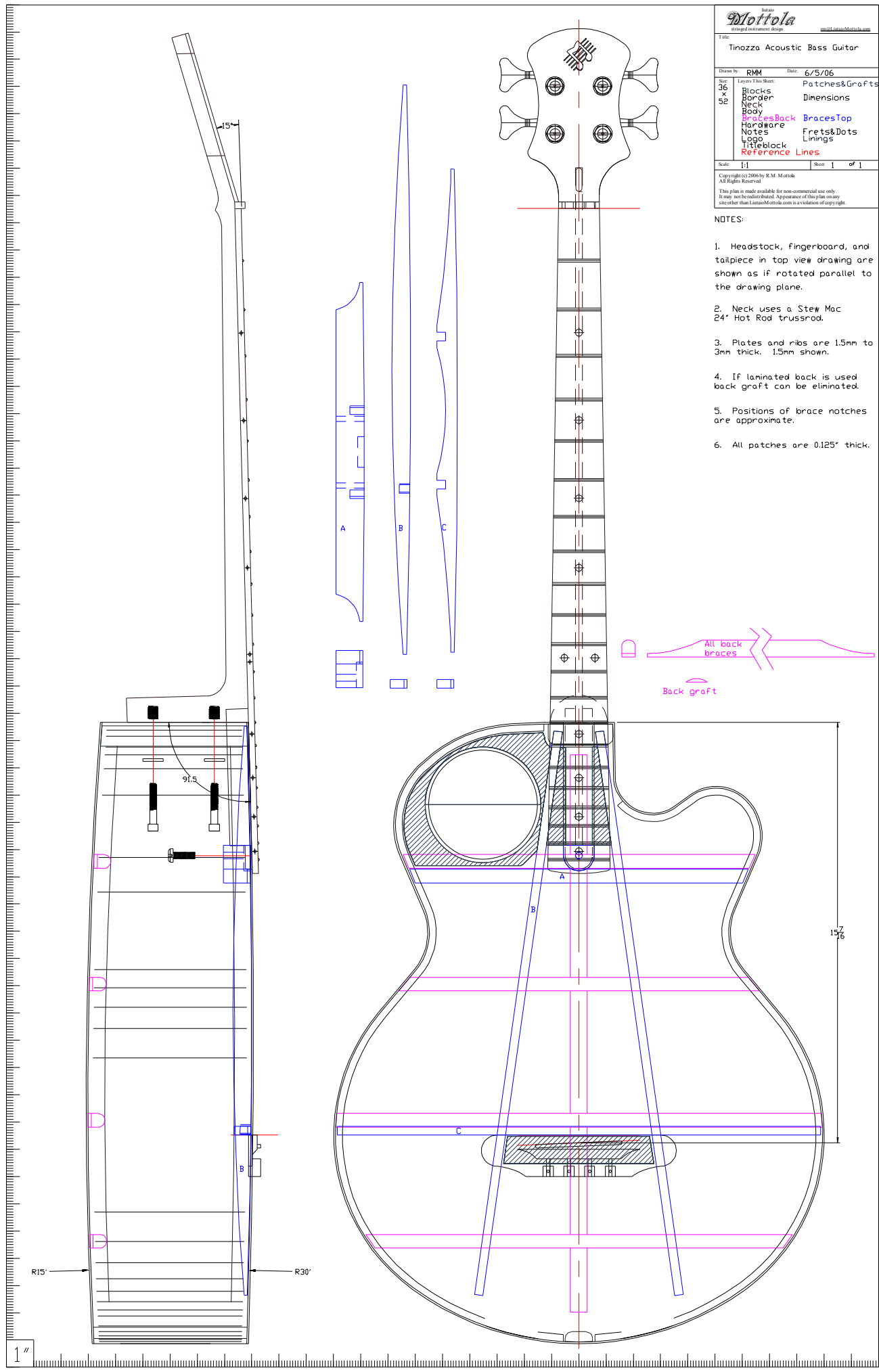
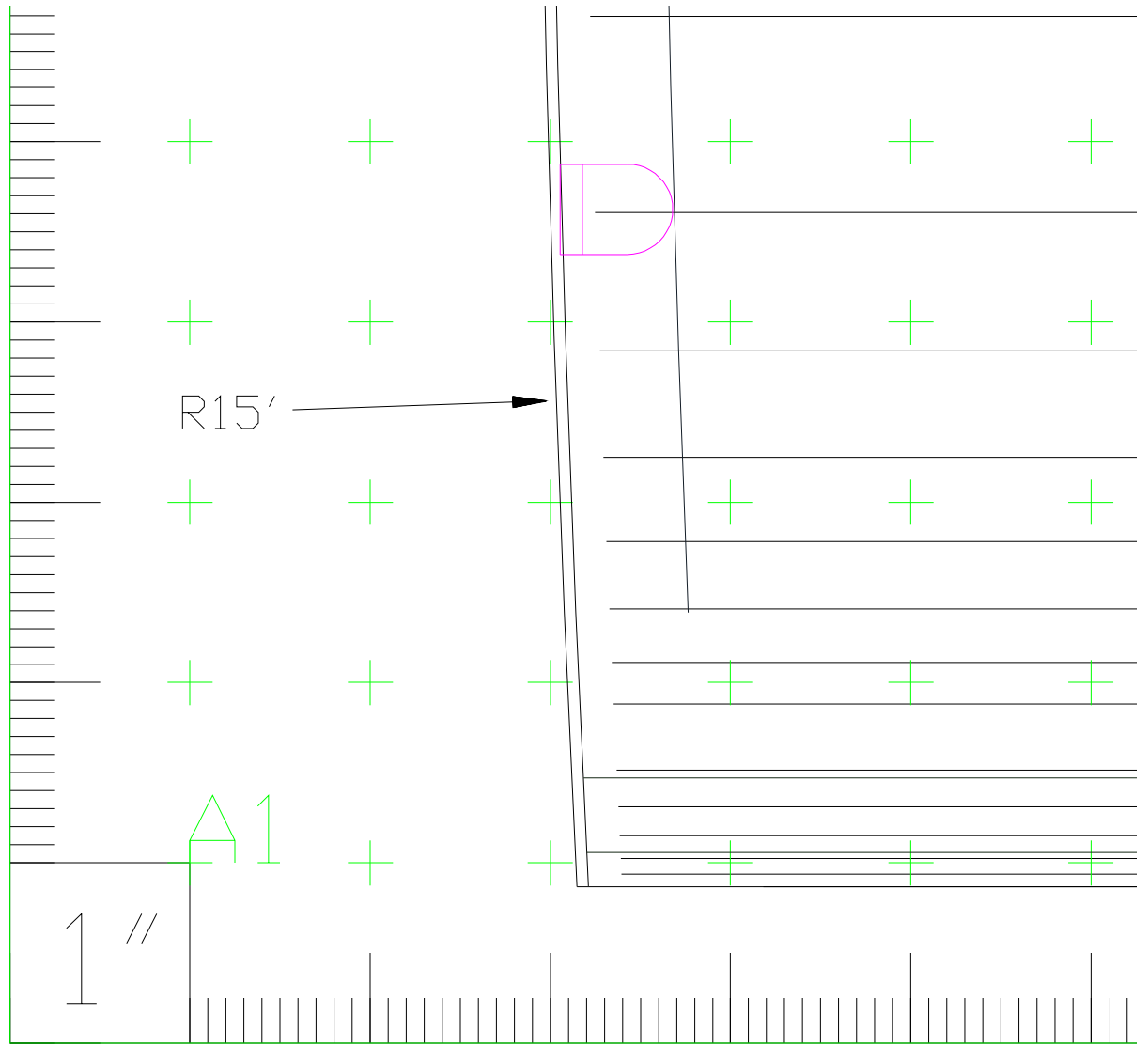


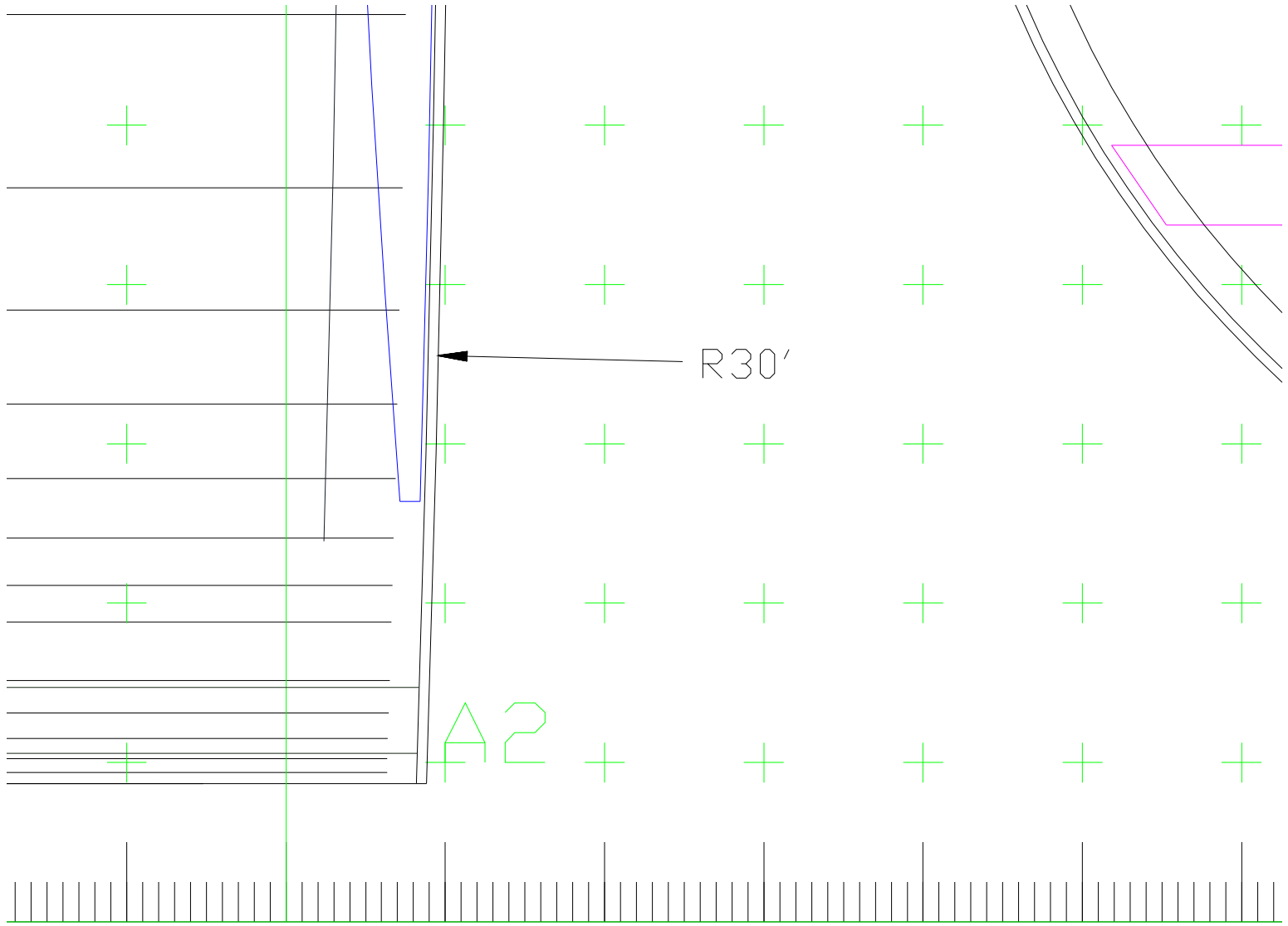
Drawn by:	RMM	Date:	6/5/06
Scale:	1:1	Sheet:	1 of 1
Layers (This Sheet):	Patches&Grafts		
36	Blocks		
x	Border		
52	Dimensions		
	Neck		
	Body		
	BracesBack	BracesTop	
	Hardware	Frets&Dots	
	Notes	Linings	
	Titleblock		
	Reference Lines		

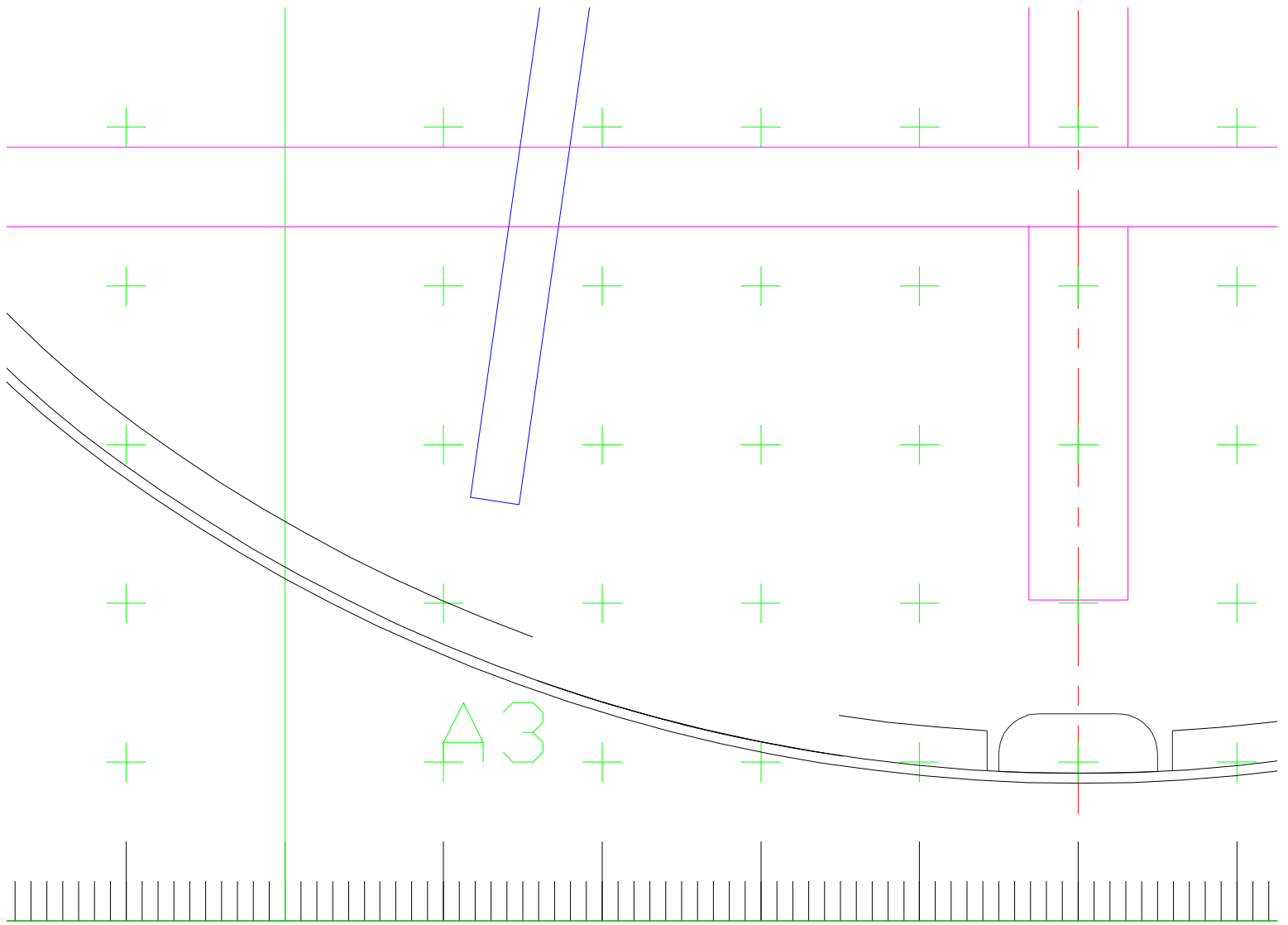
Copyright © 2006 by R.M. Mottola
All Rights Reserved
This plan is made available for non-commercial use only.
It may not be reproduced. Appearance of this plan on any
site other than LanzaMottola.com is a violation of copyright.

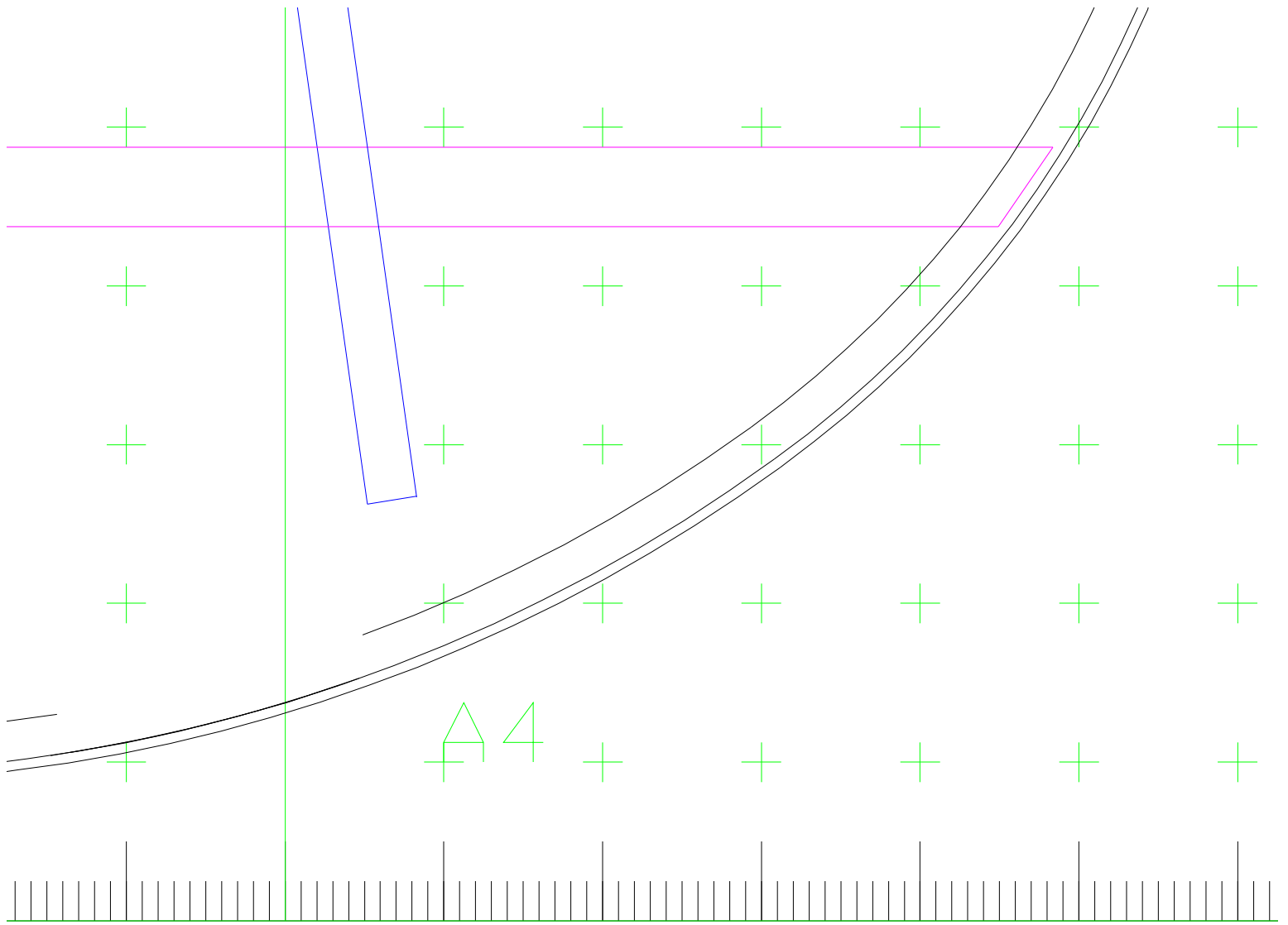
- NOTES:
1. Headstock, fingerboard, and tailpiece in top view drawing are shown as if rotated parallel to the drawing plane.
 2. Neck uses a Stew Mac 24" Hot Rod trussrod.
 3. Plates and ribs are 1.5mm to 3mm thick. 1.5mm shown.
 4. If laminated back is used back graft can be eliminated.
 5. Positions of brace notches are approximate.
 6. All patches are 0.125" thick.

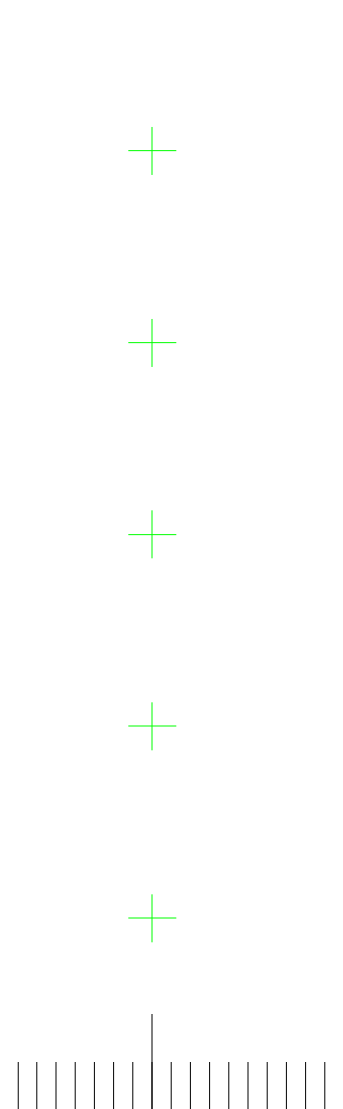


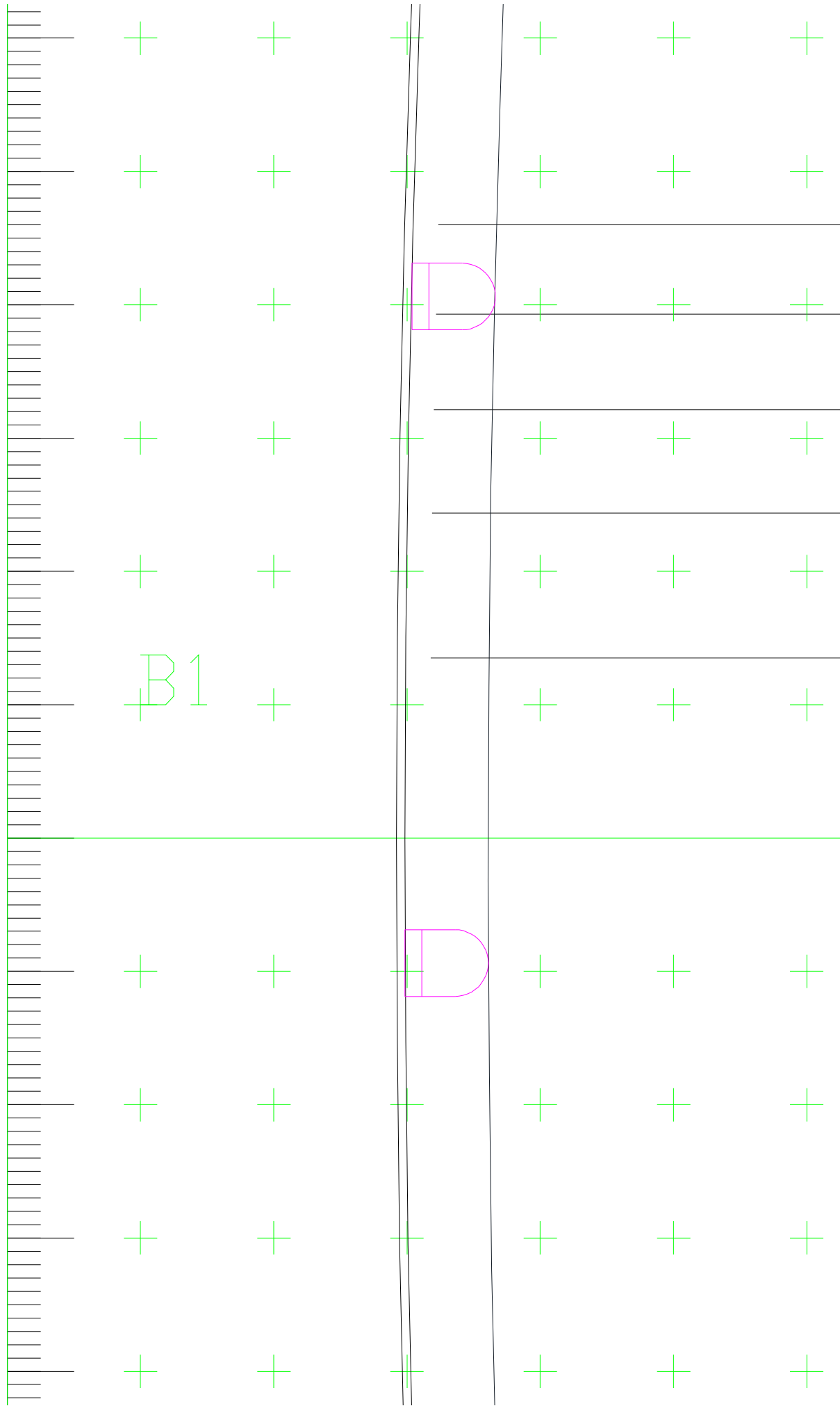




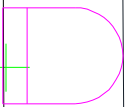
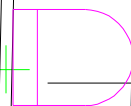


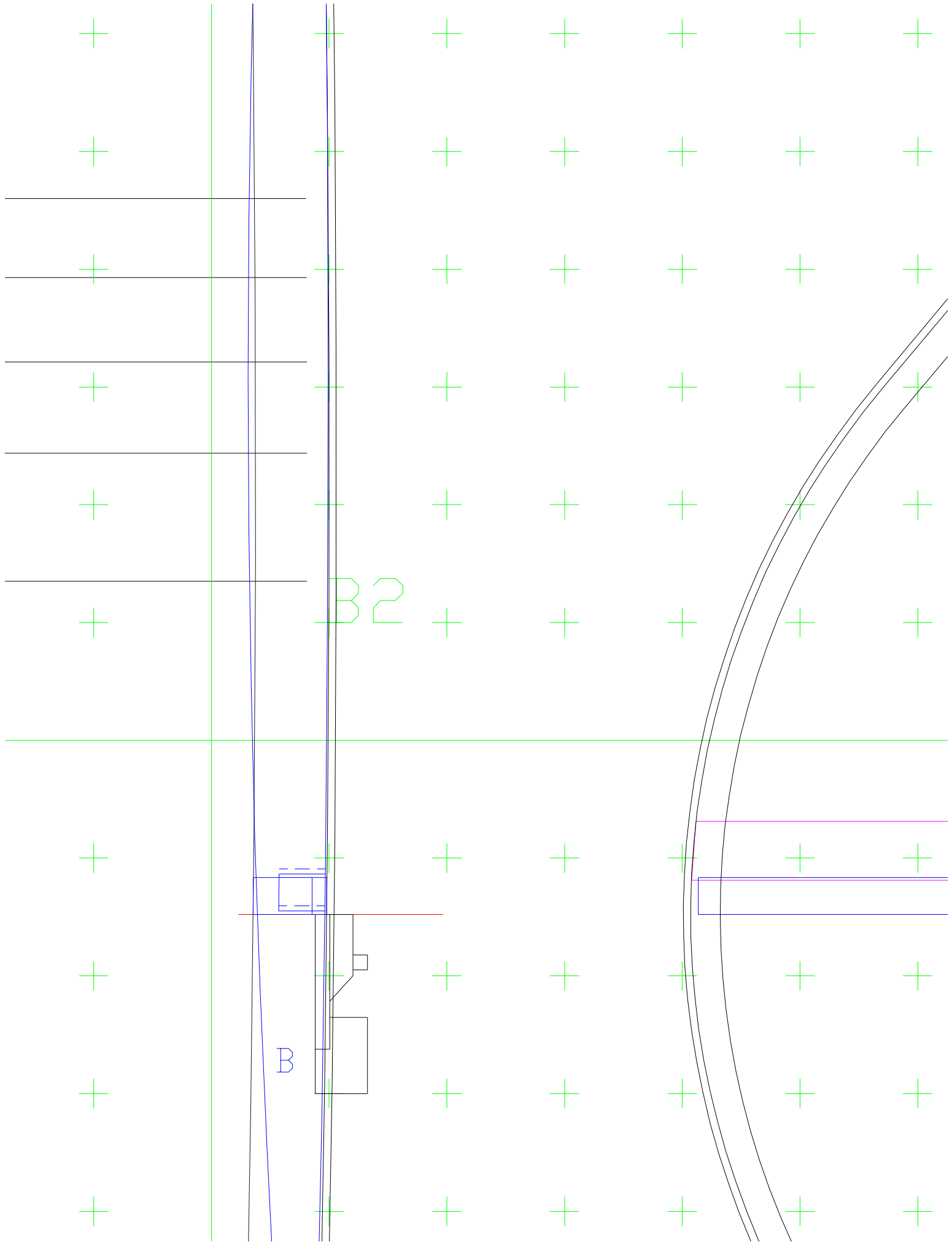


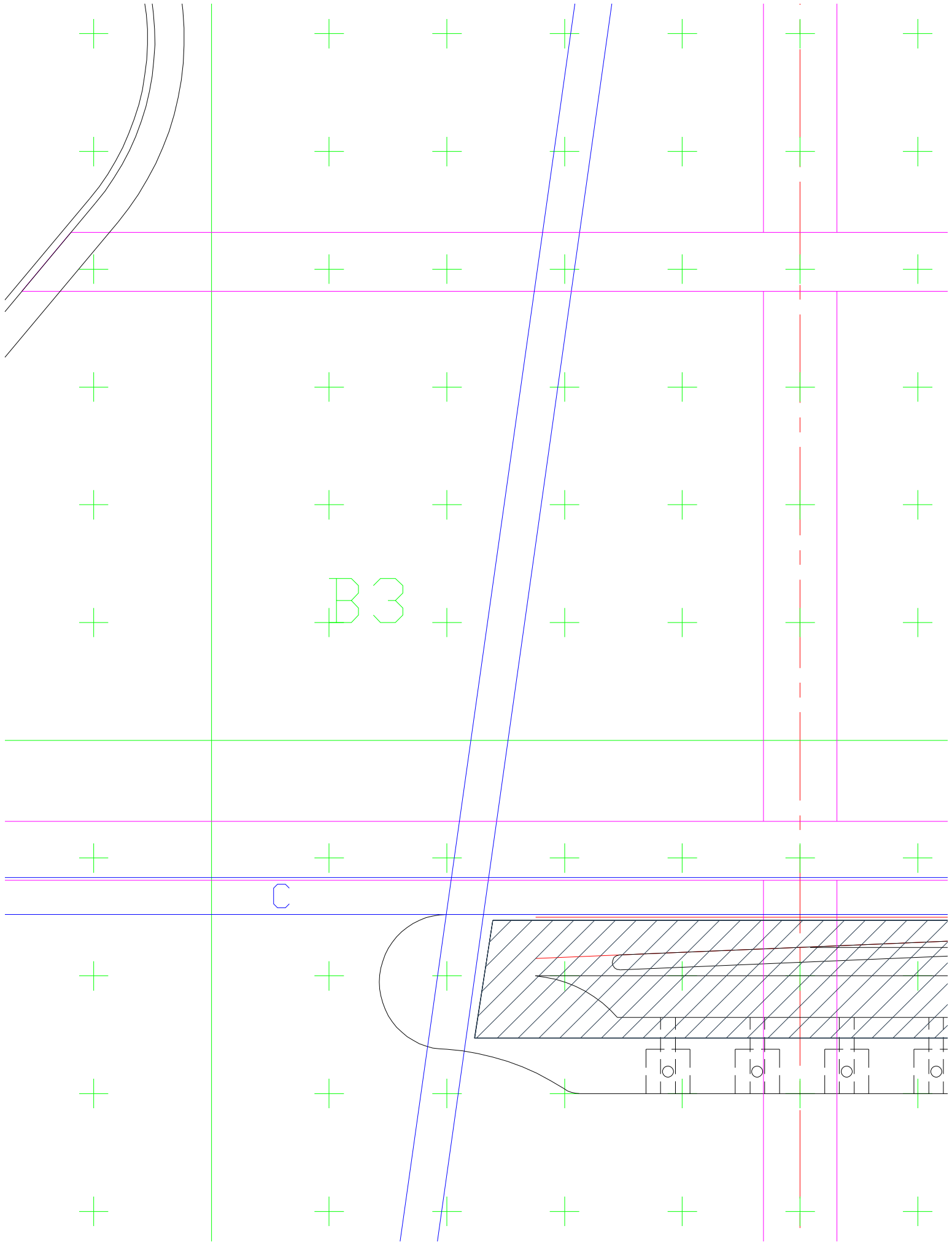


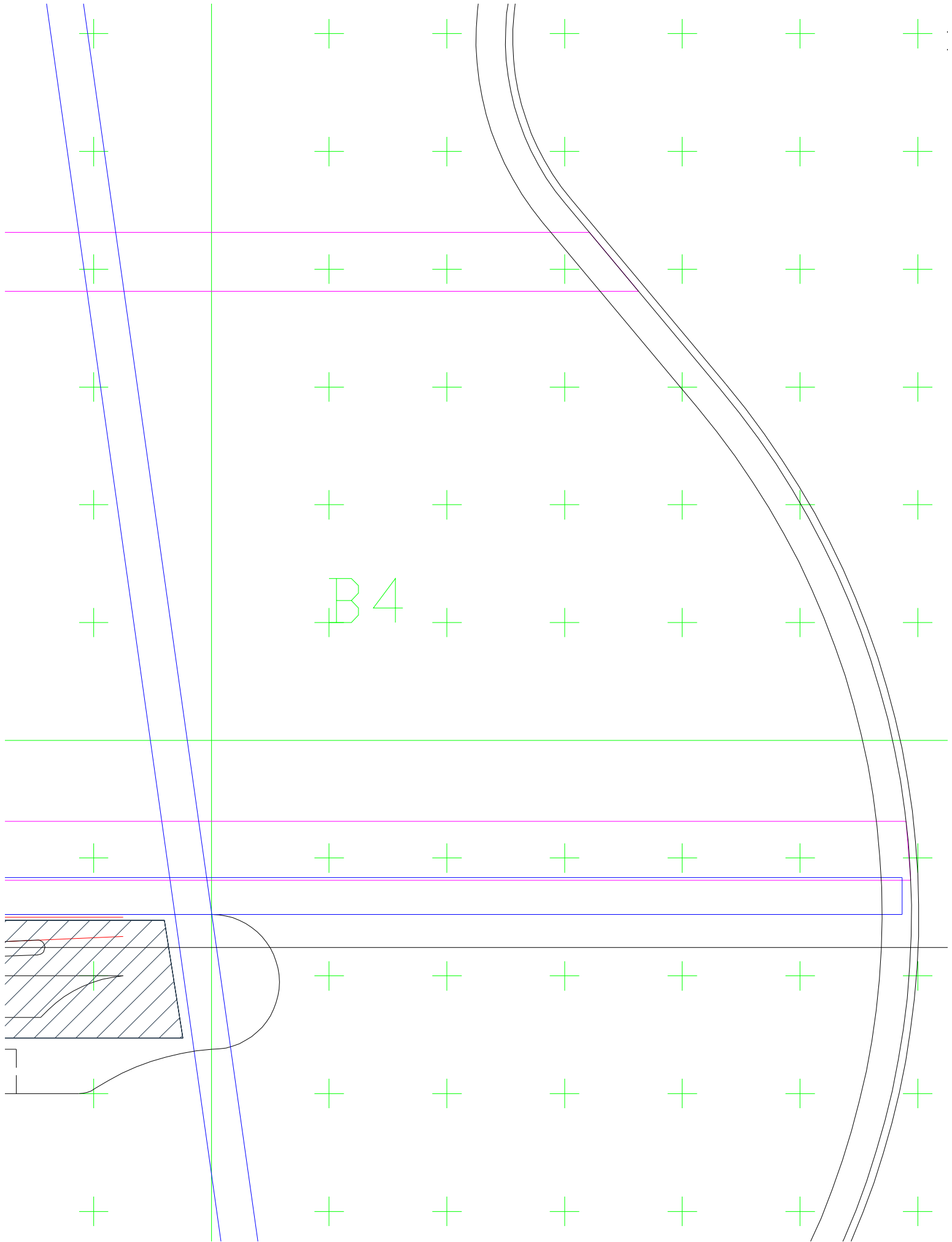


B1









$$15\frac{7}{16}$$

+

+

+

+

+

+

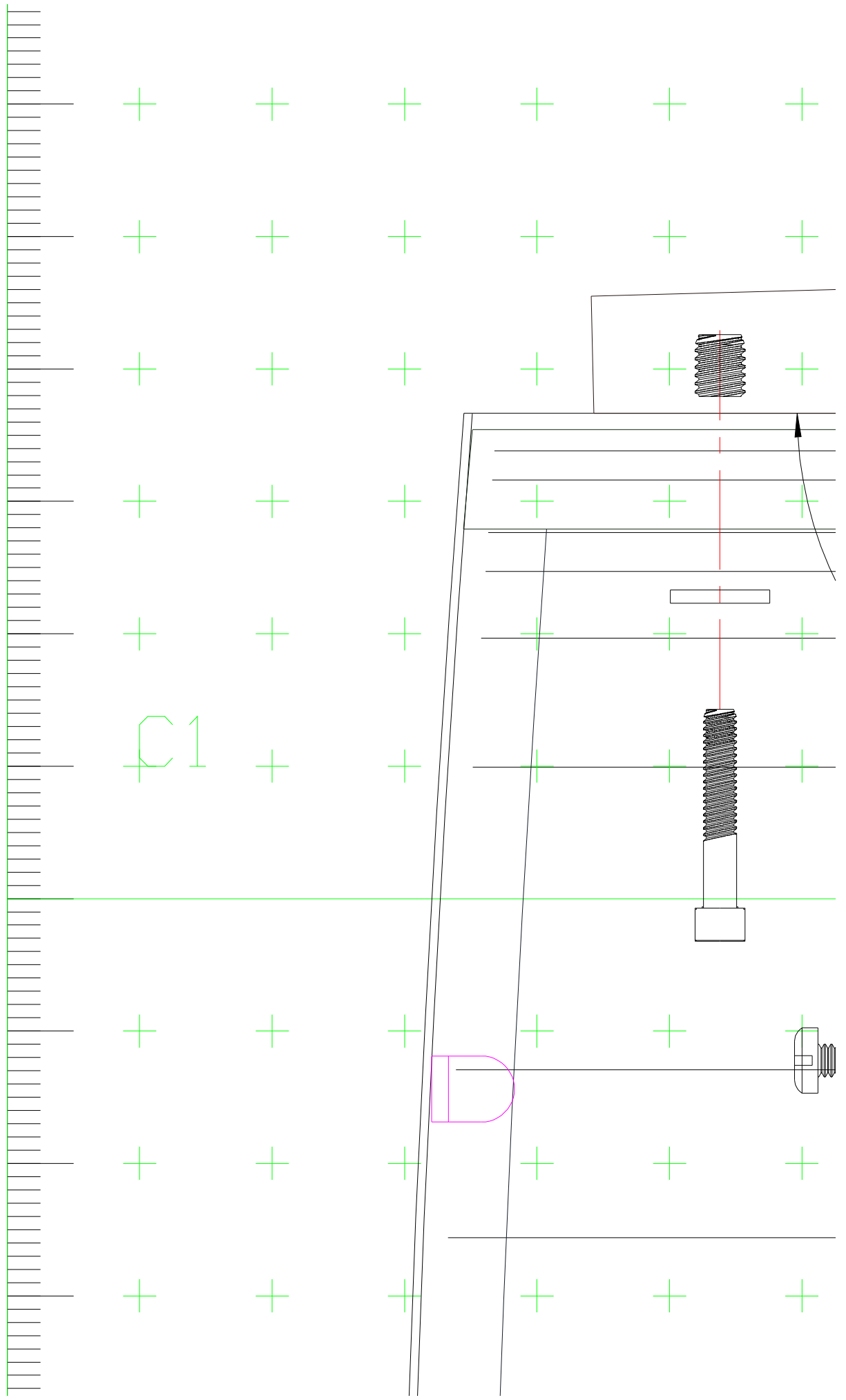
+

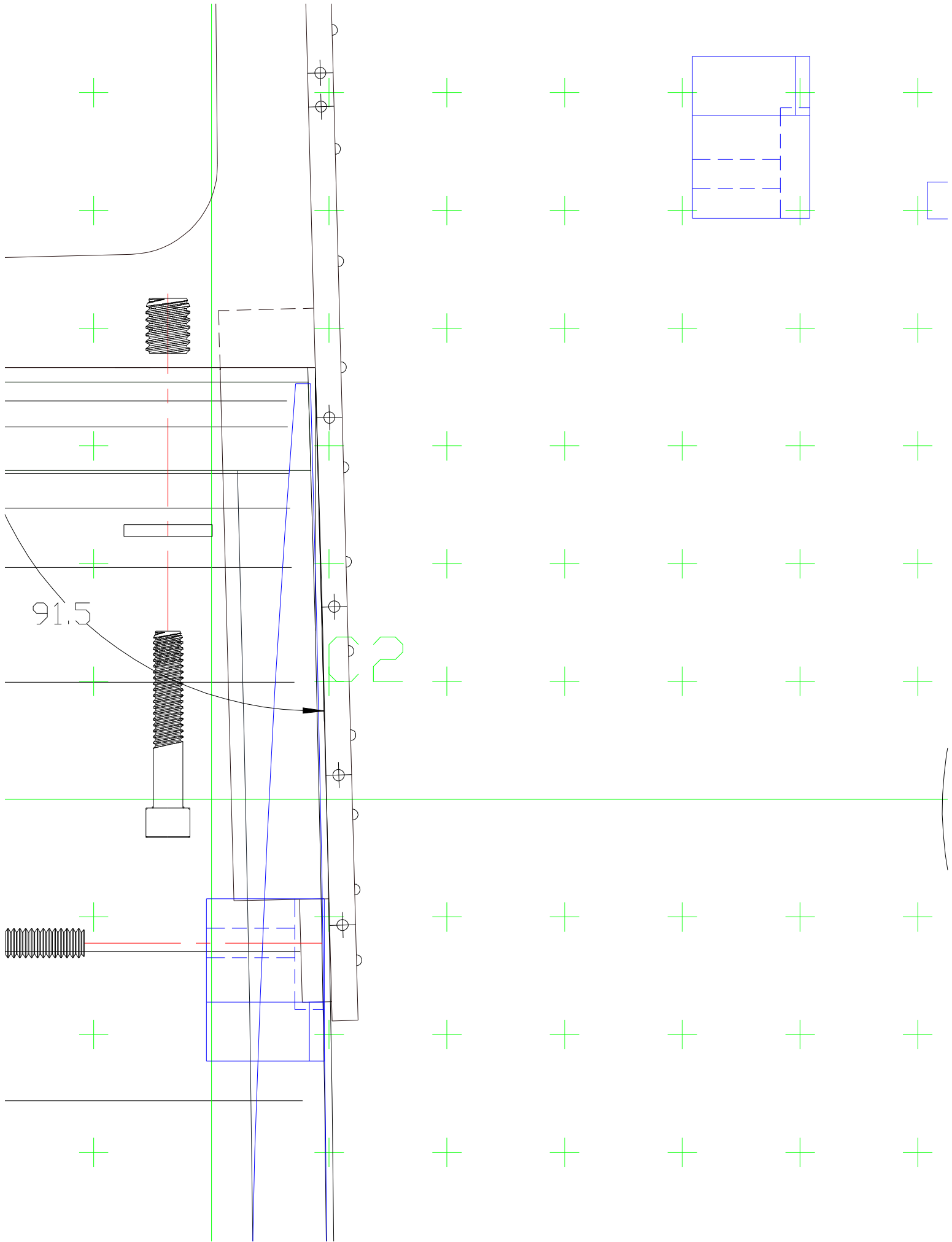
+

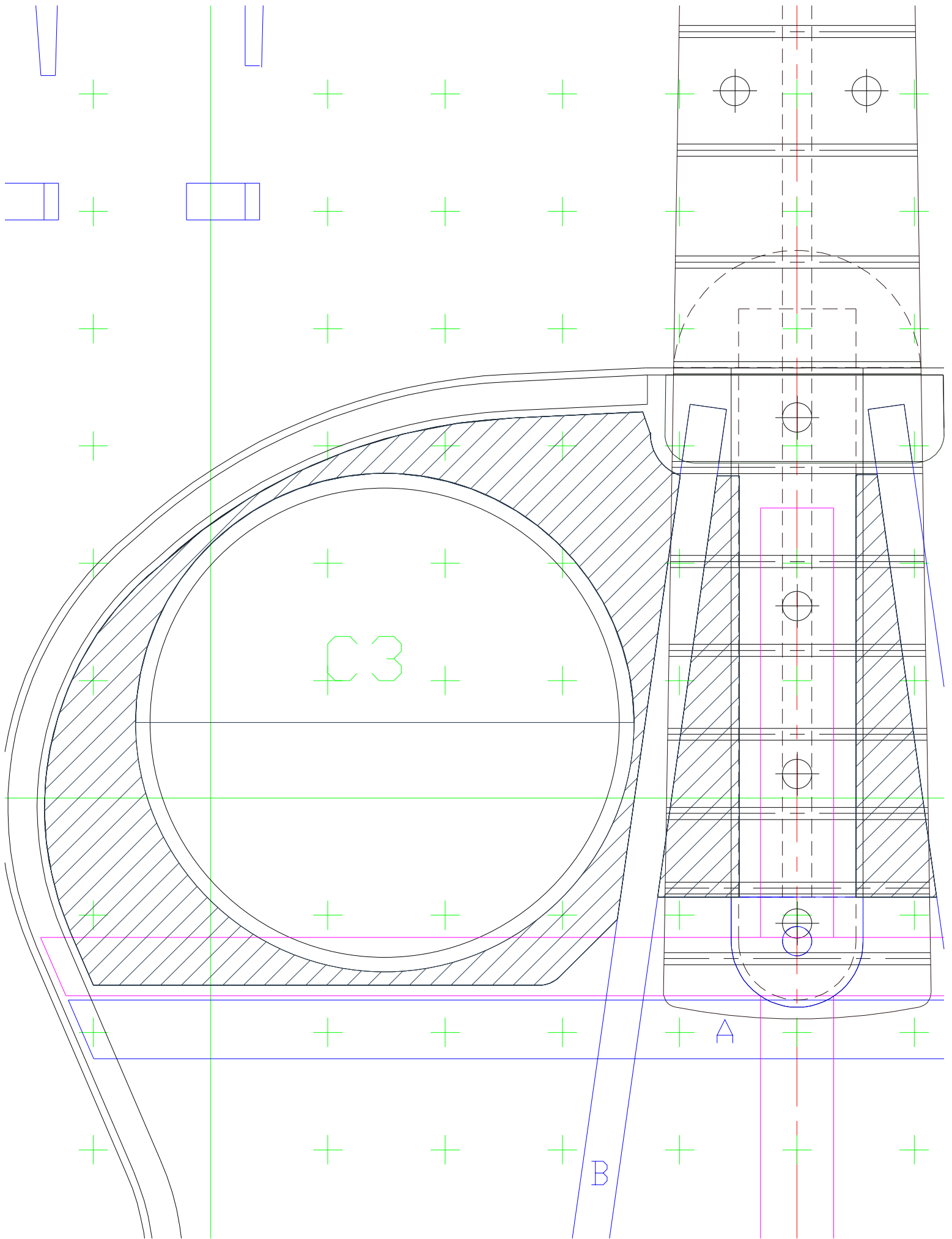
+

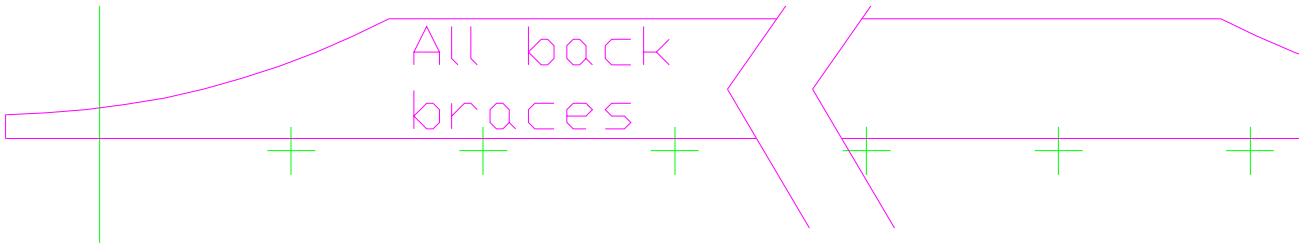
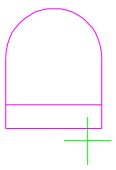
+



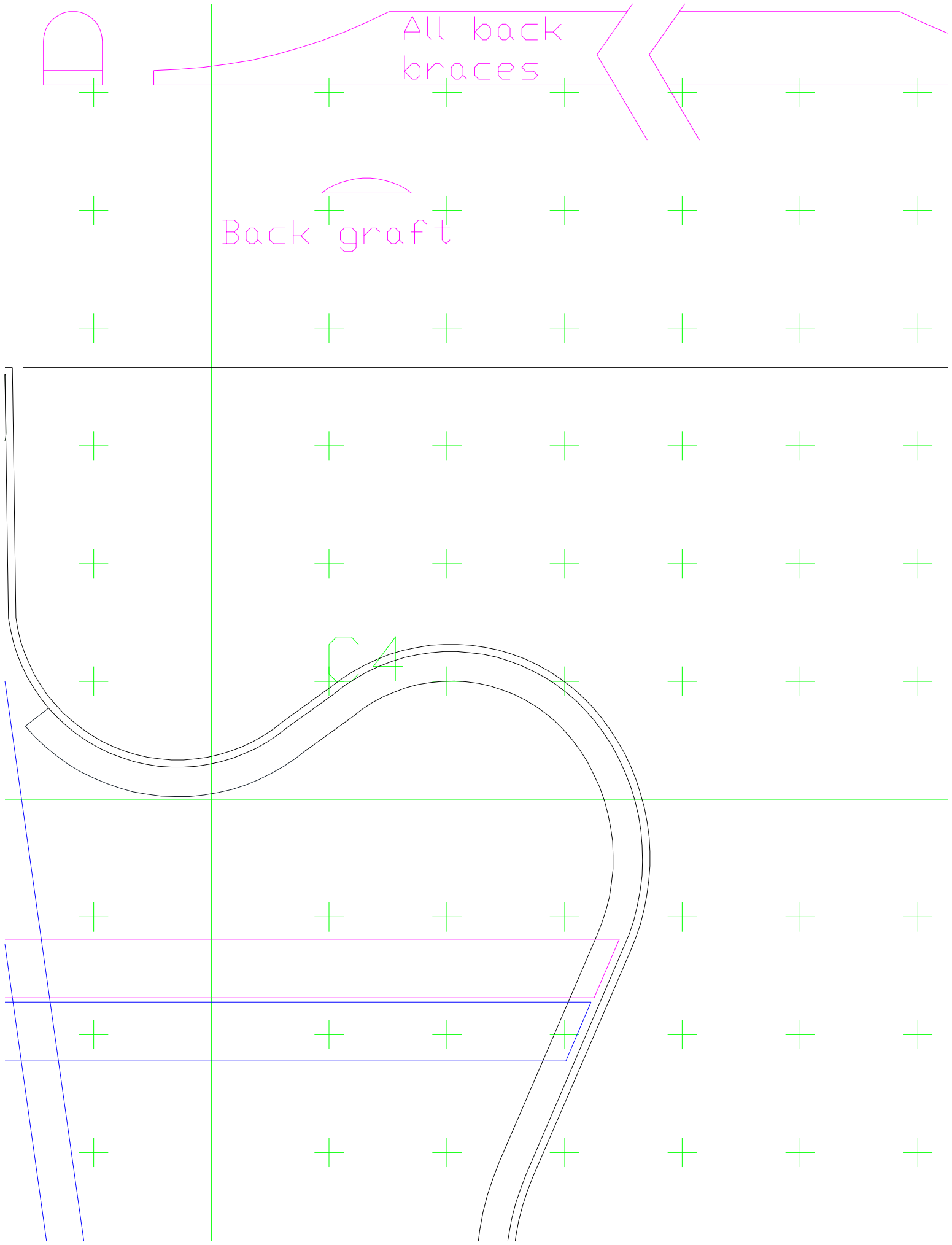


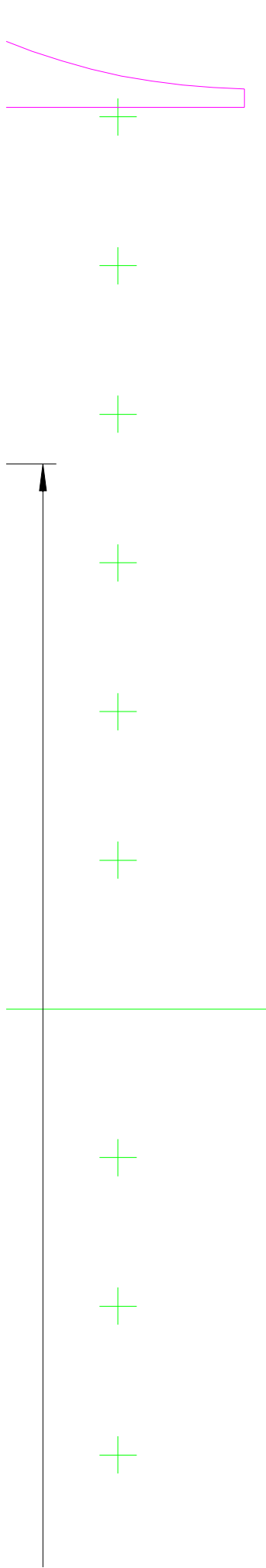


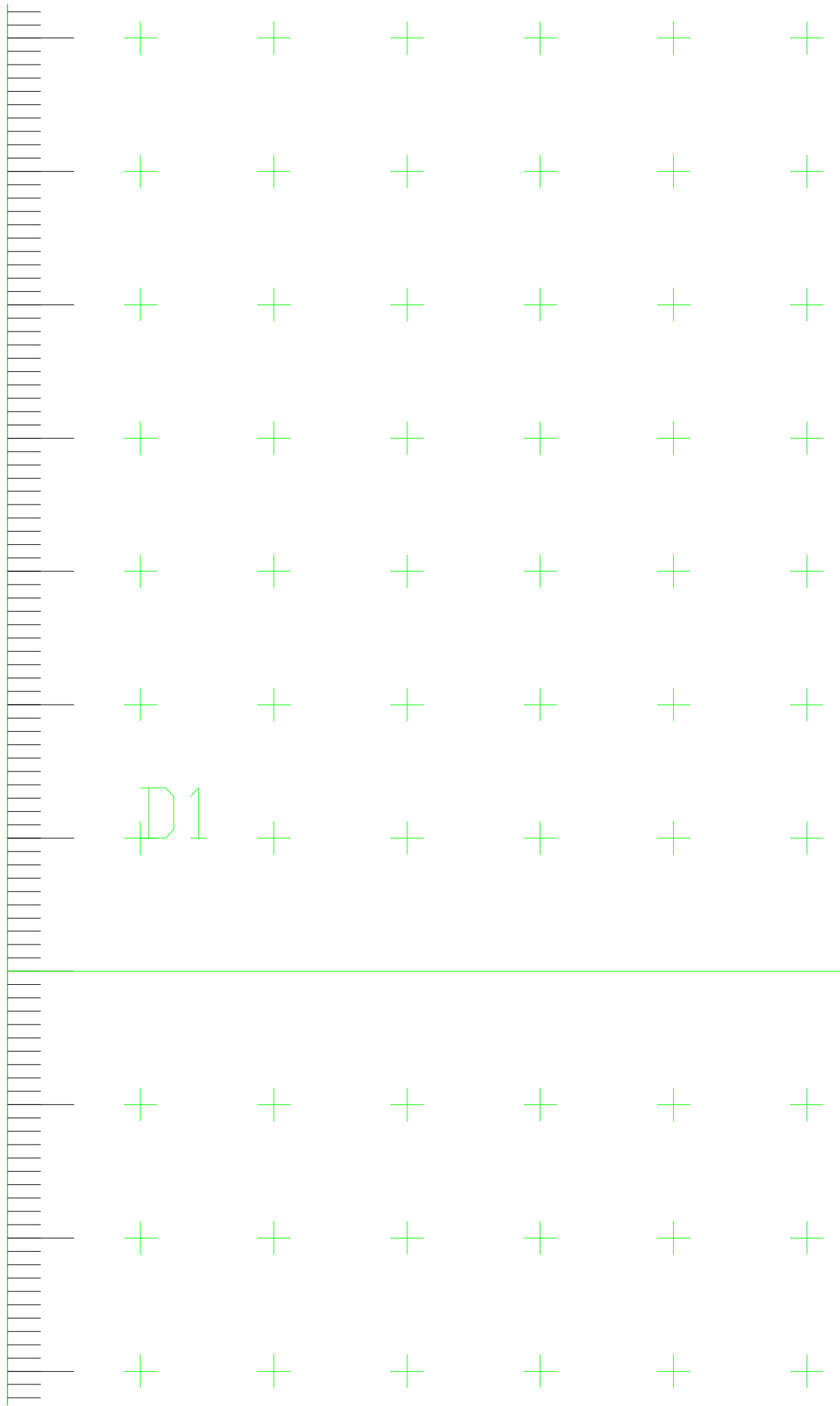


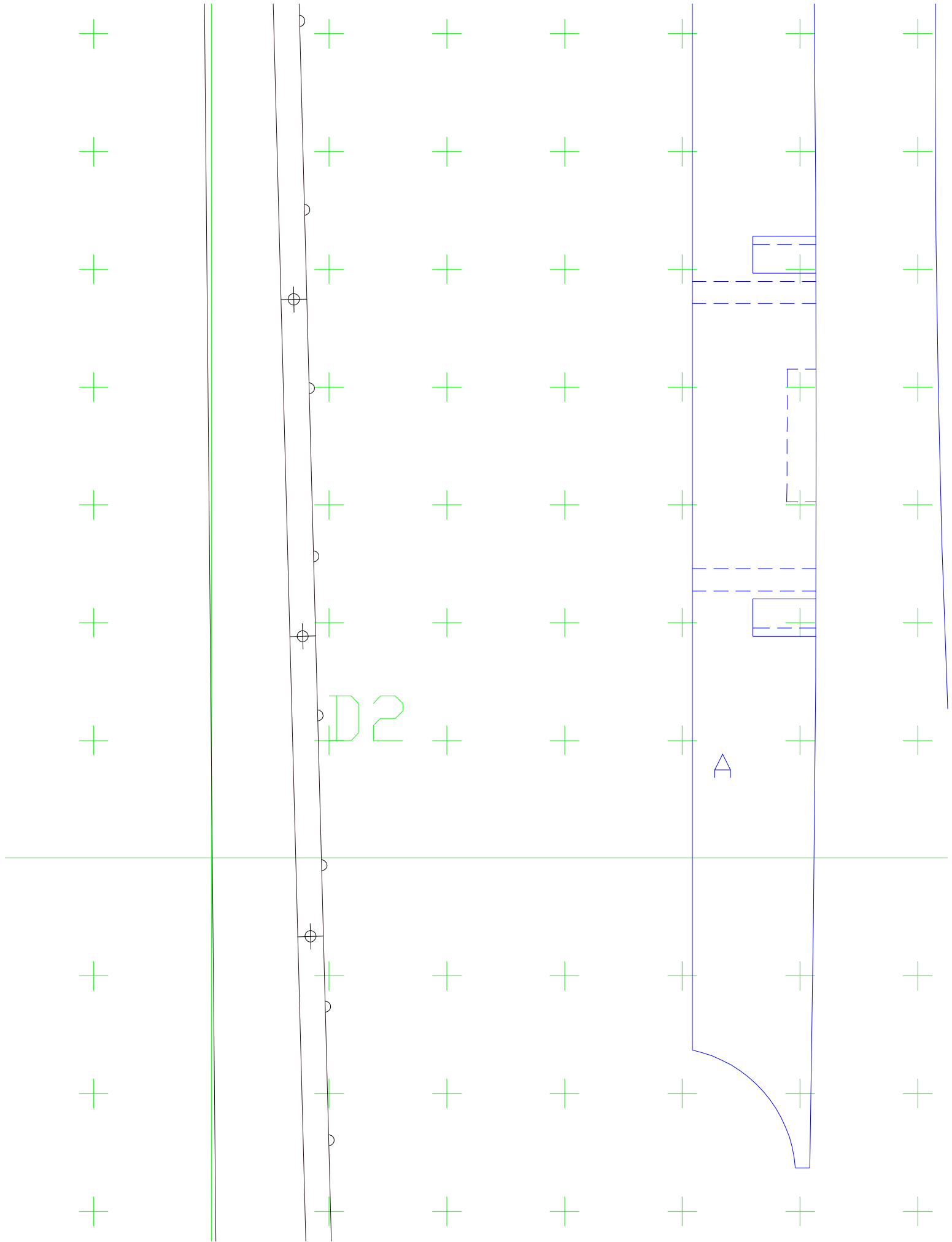


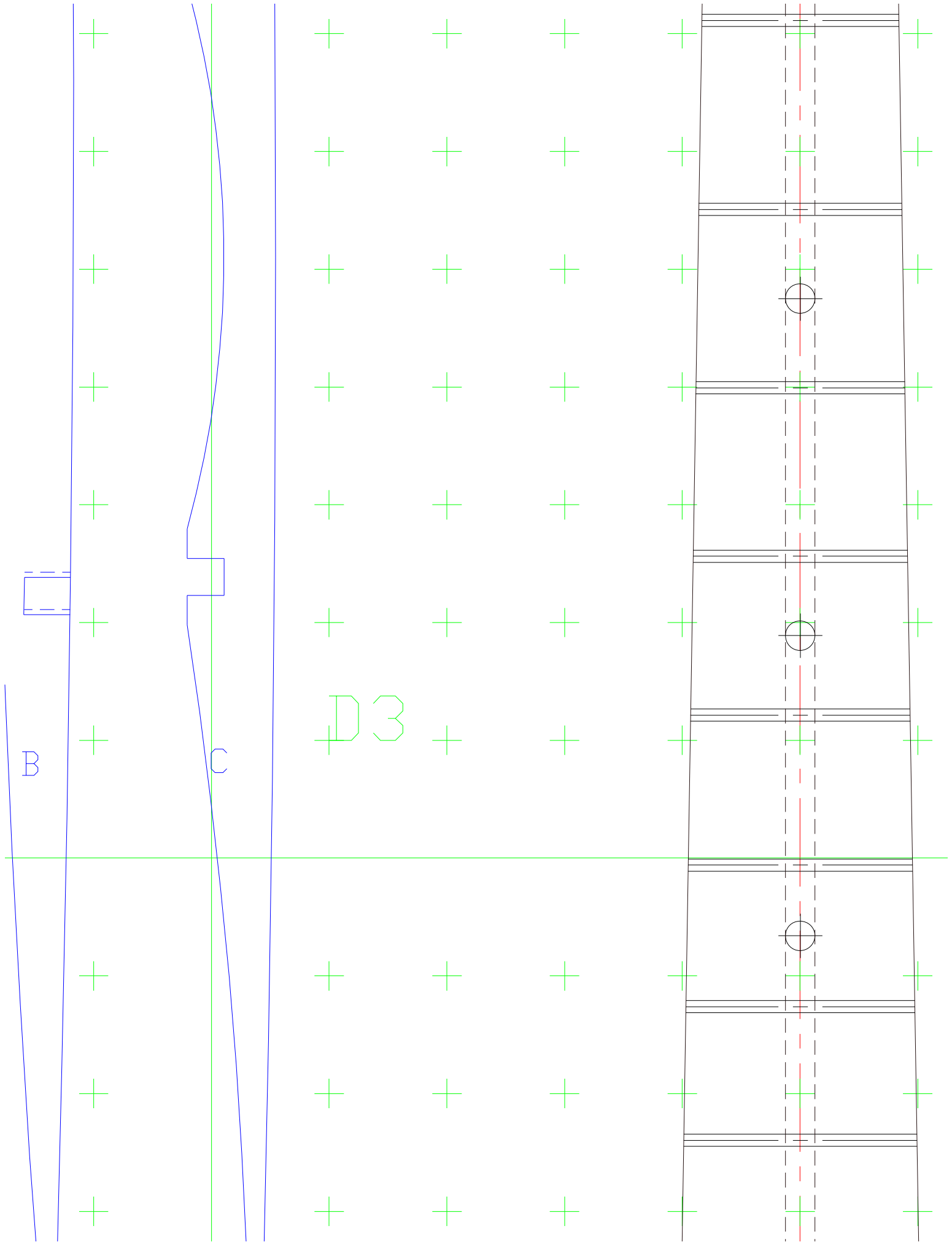
Back graft











SPINE CENTER. 1. SPINE STOWING.

+

+

+

+

+

+

+

+

+

4. If laminated back is back graft can be elimin

+

+

5. Positions of brace are approximate.

+

+

6. All patches are 0.125

+

+

+

+

+

+

+

+

+

+

+

+

+

+

+

D4

+

+

+

+

+

+

+

+

+

+

+

+

+

+

+

+

+

+

+

+

+

+

+

+

+

+

+

used
noted.

notches

5" thick.

+

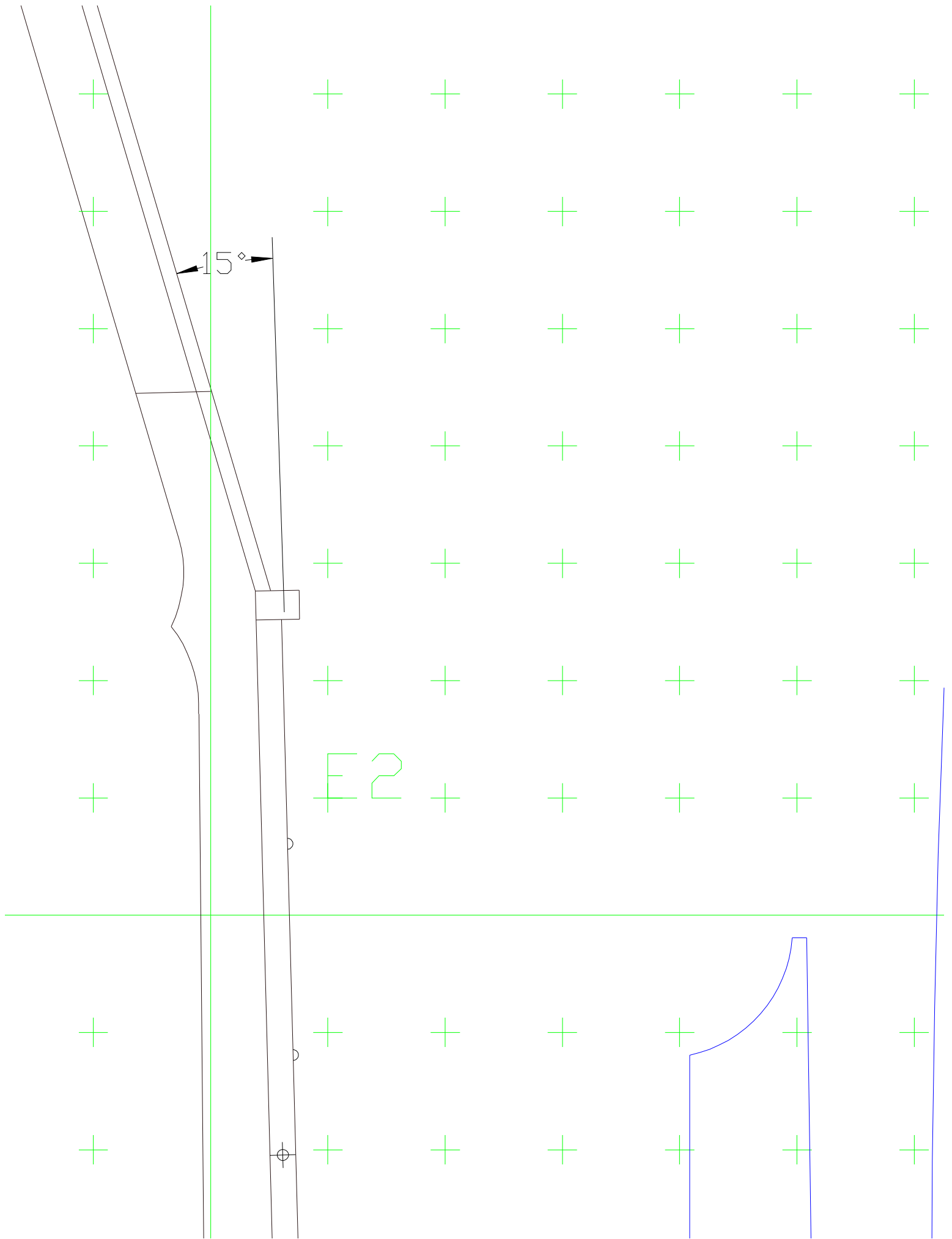
+

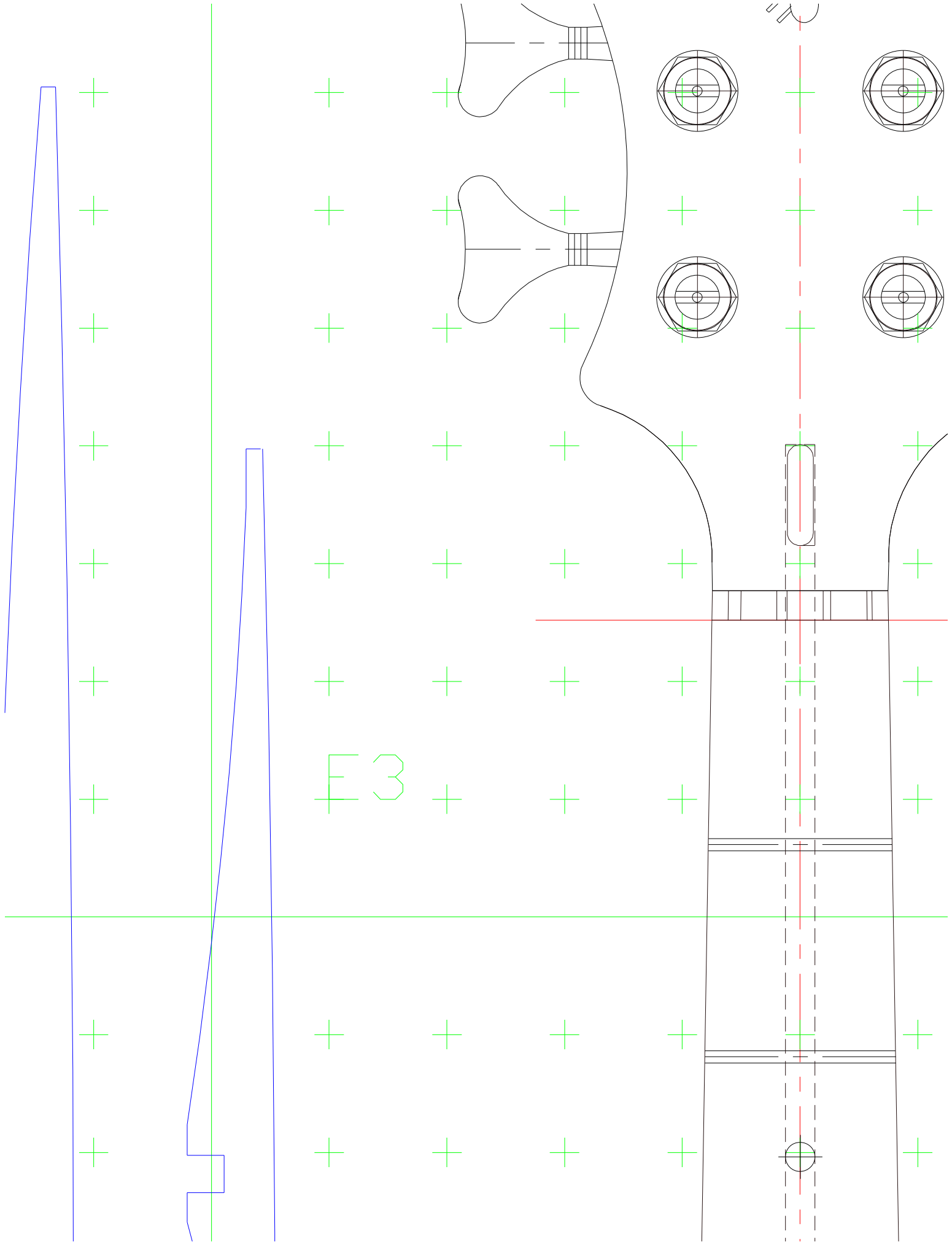
+

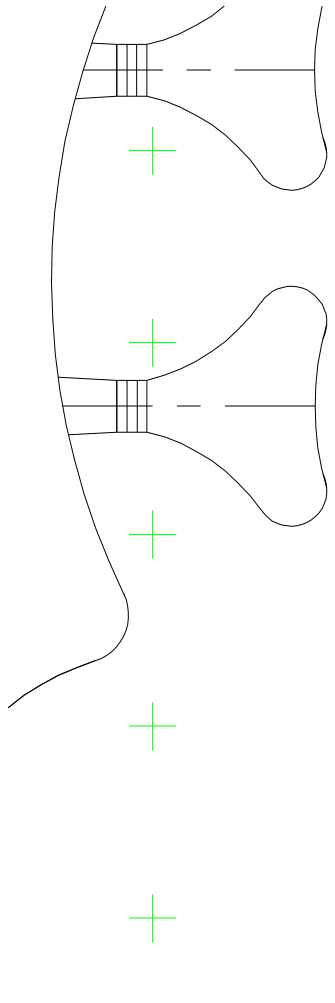
+

+

+







Drawn by: RMM		Date: 6/5/06	
Size: 36 x 52	Layers This Sheet:		
	Blocks	Border	Print
	Neck	Body	Braces
	Hardware	Notes	Logo
	Titleblock	Reference	Lines
Scale: 1:1	Sheet		
Copyright (c) 2006 by R.M. Mottola All Rights Reserved			
This plan is made available for non-commercial use on It may not be redistributed. Appearance of this plan on site other than Liutaiomottola.com is a violation of cop			

NOTES:

E4

1. Headstock, fingerboard, tailpiece in top view drawn shown as if rotated parallel to the drawing plane.

2. Neck uses a Stew Mac 24" Hot Rod trussrod.

3. Plates and ribs are 2mm thick, 1.5mm shown

5

es&Grafts

ions

Grid

sTop

&Dots

5 +

1 of 1

ly.
any
yright.

+

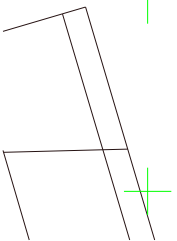
ard, and
xwing are
rallel to

ac +

+

1.5mm to





+

+

+

+

+

+

+

+

+

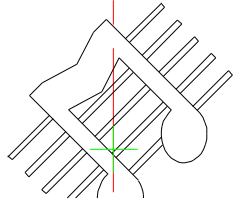
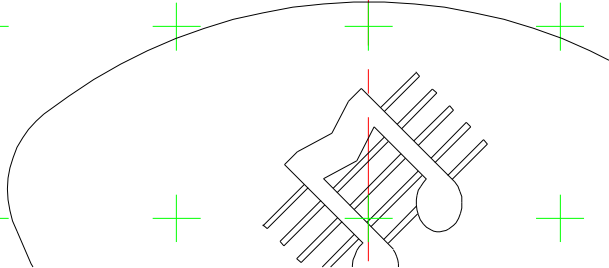
+

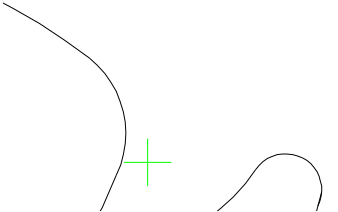
+

+

+

+



		<p>liutaio</p> <p><i>Mottola</i></p> <p>stringed instrument design</p> <p>rm@</p> <hr/> <p>Title:</p> <p>Tinozza Acoustic Bass</p>
--	--	--

Liutaiomottola.com



Guitar

