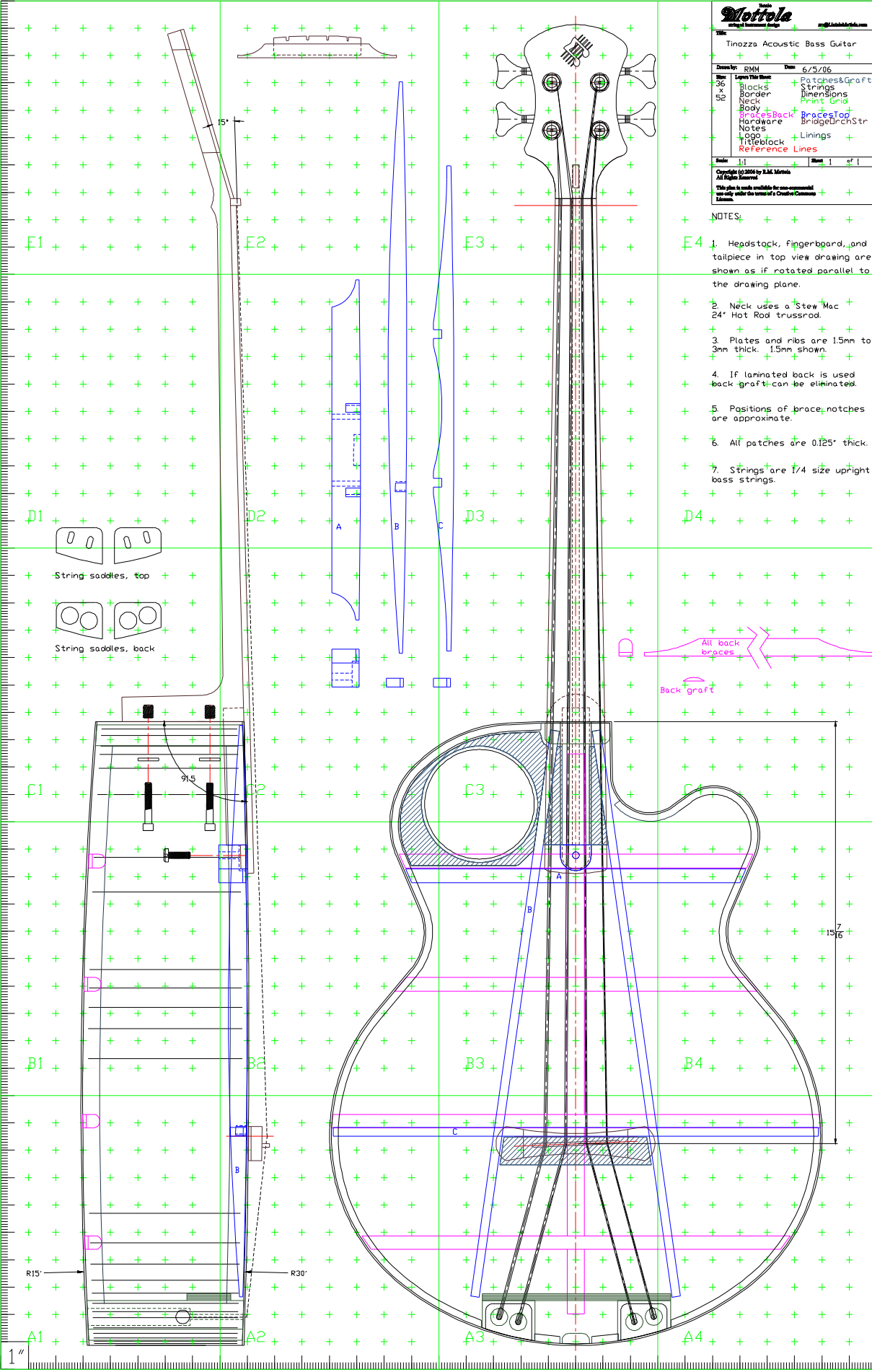
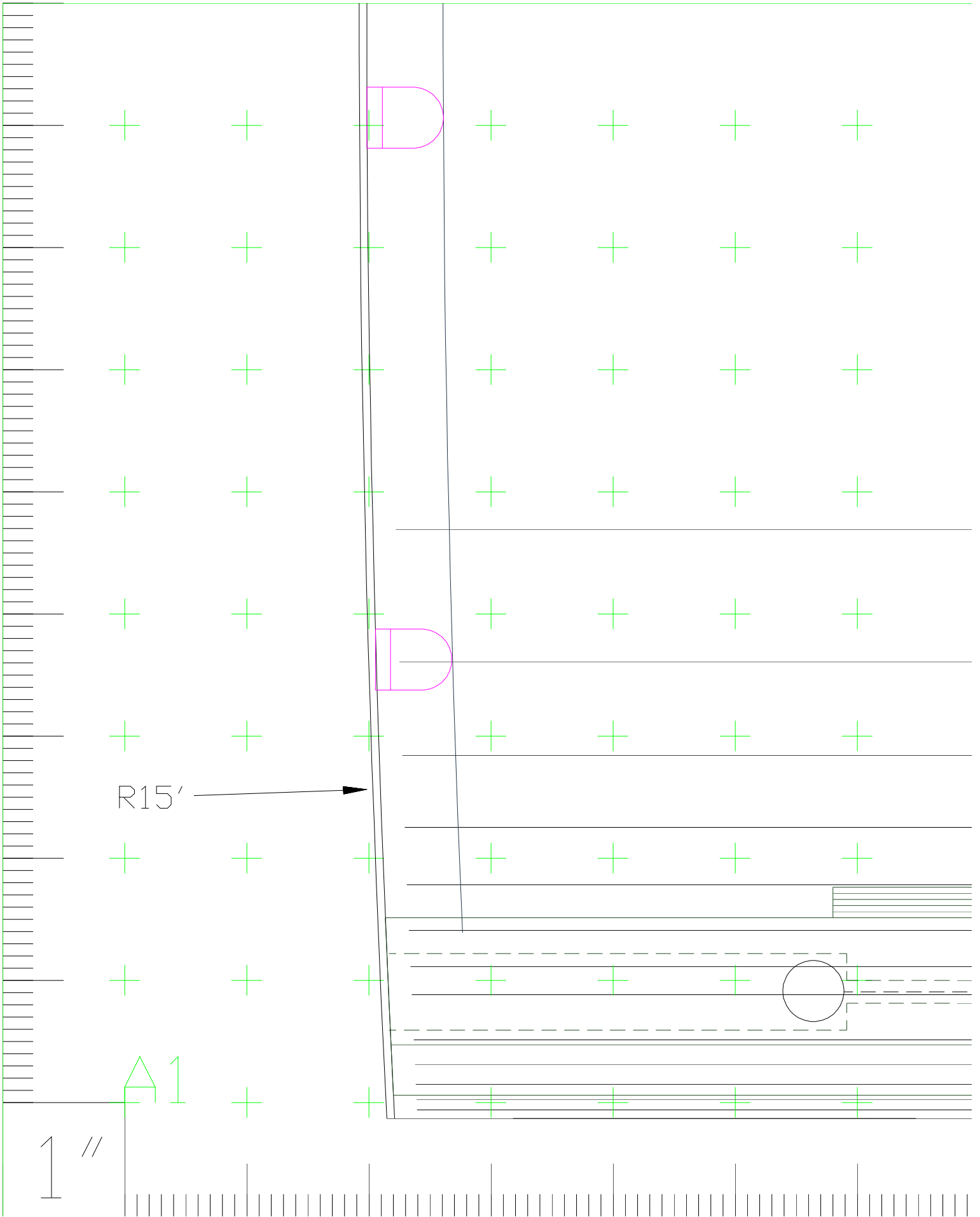


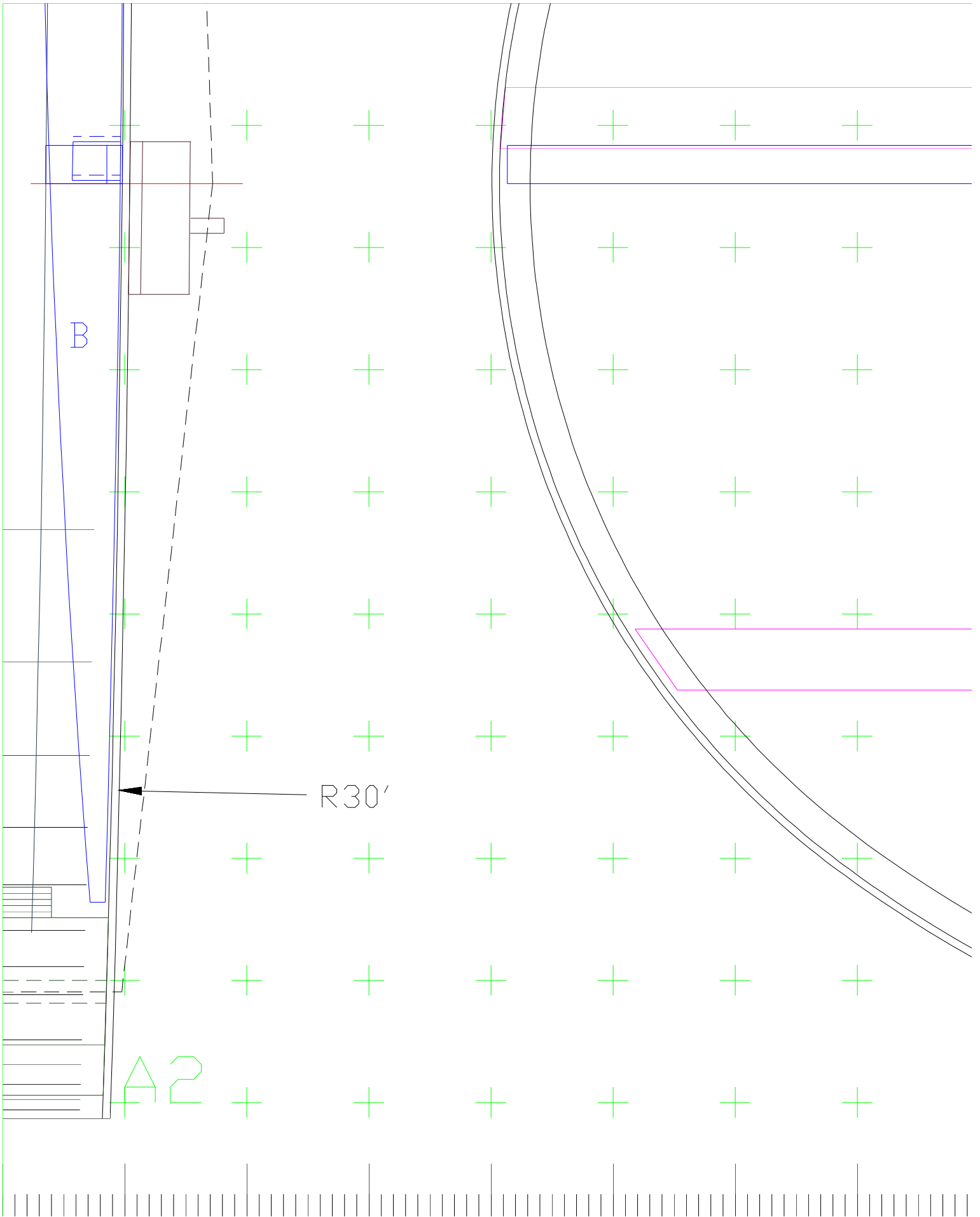
Rev	Layer Title Desc	Changes
36	Blocks	Patches&Grafts
37	Border	Strings
38	Neck	Dimensions
39	Body	Print Grid
40	Back	Braces
41	Hardware	Top
42	Notes	Bridge&TrchStr
43	Logo	Linings
44	Reference	Lines

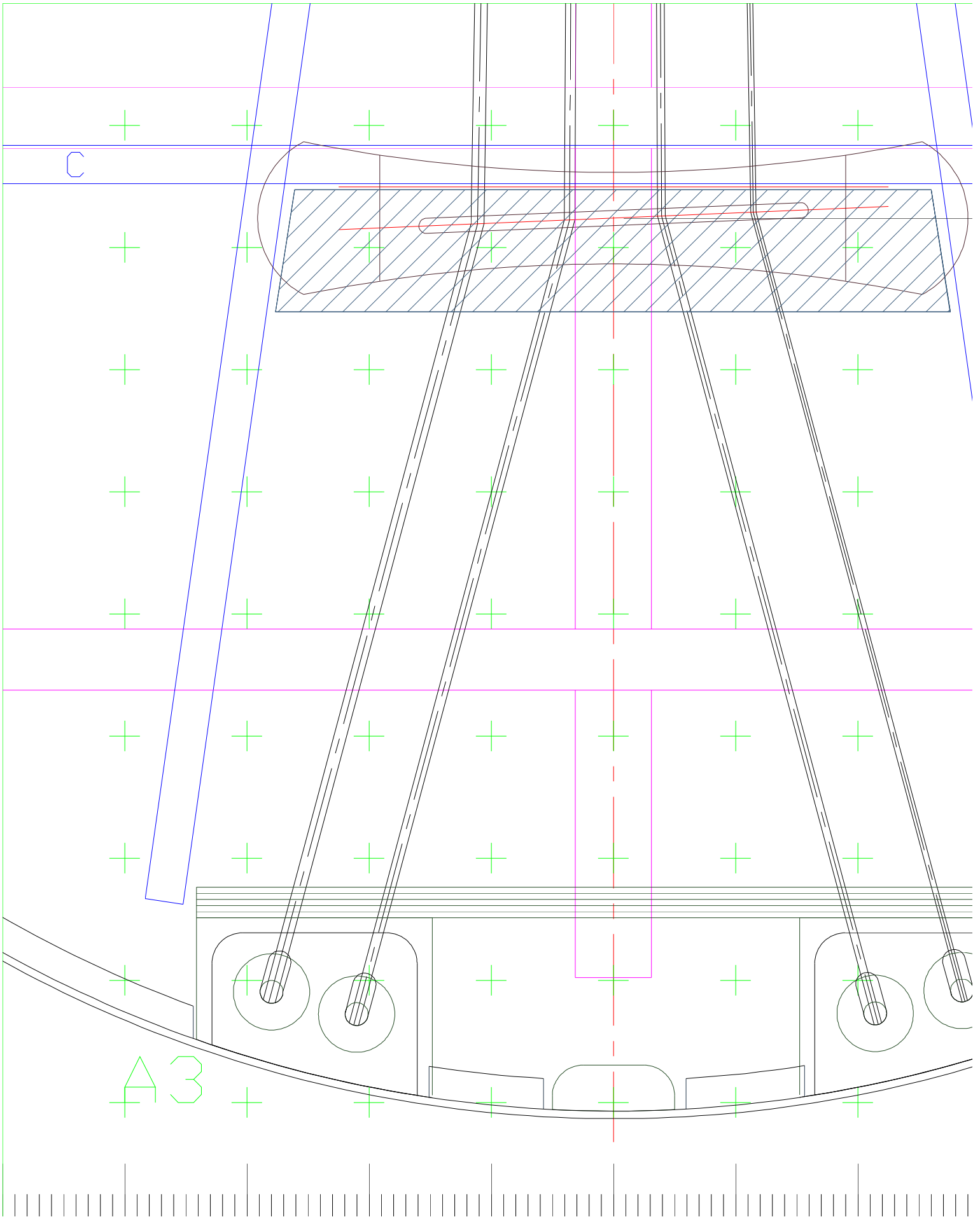
NOTES:

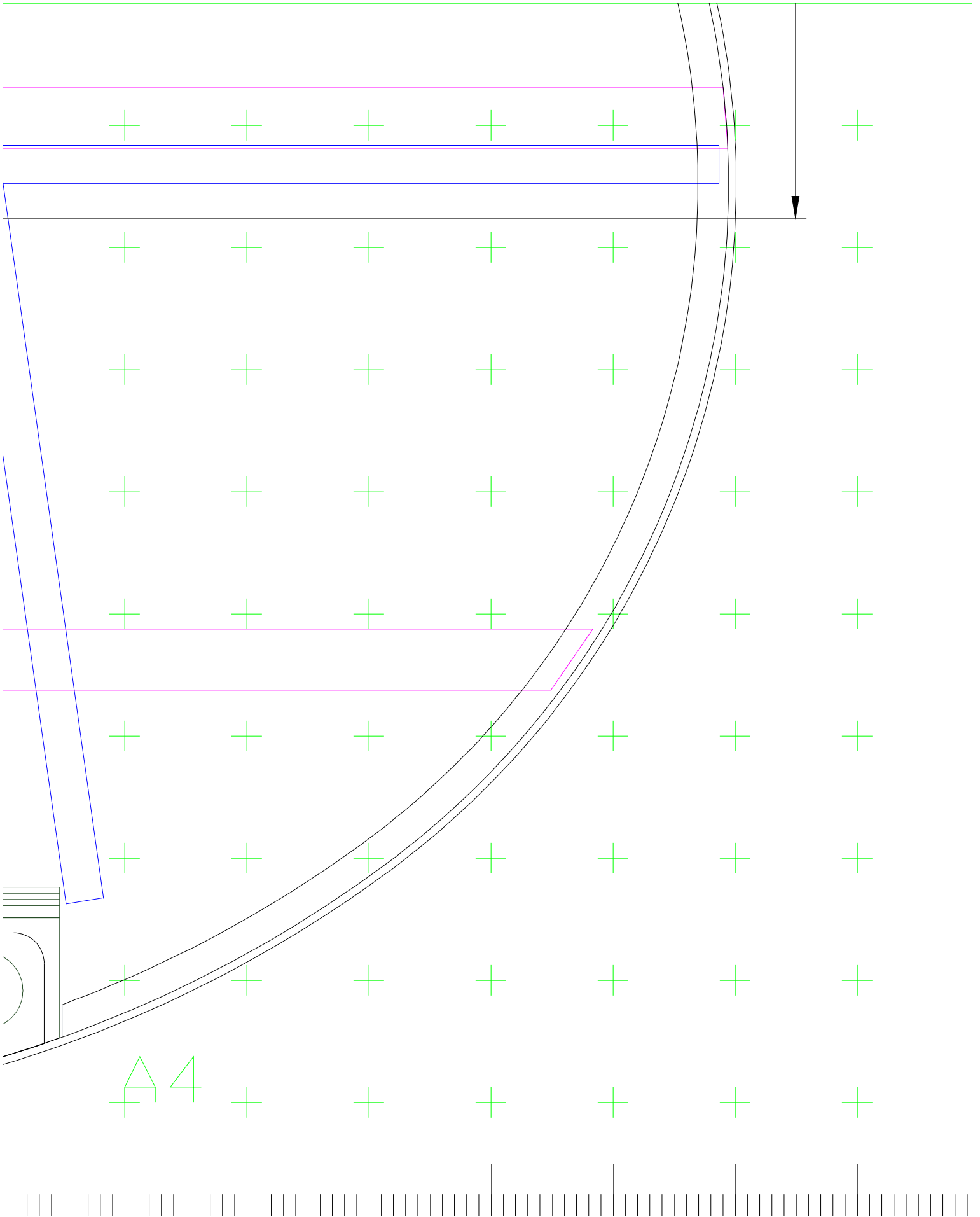
1. Headstock, fingerboard, and tailpiece in top view drawing are shown as if rotated parallel to the drawing plane.
2. Neck uses a Stew Mac 24" Hot Rod trussrod.
3. Plates and ribs are 1.5mm to 3mm thick. 1.5mm shown.
4. If laminated back is used back graft can be eliminated.
5. Positions of brace notches are approximate.
6. All patches are 0.125" thick.
7. Strings are I/4 size upright bass strings.

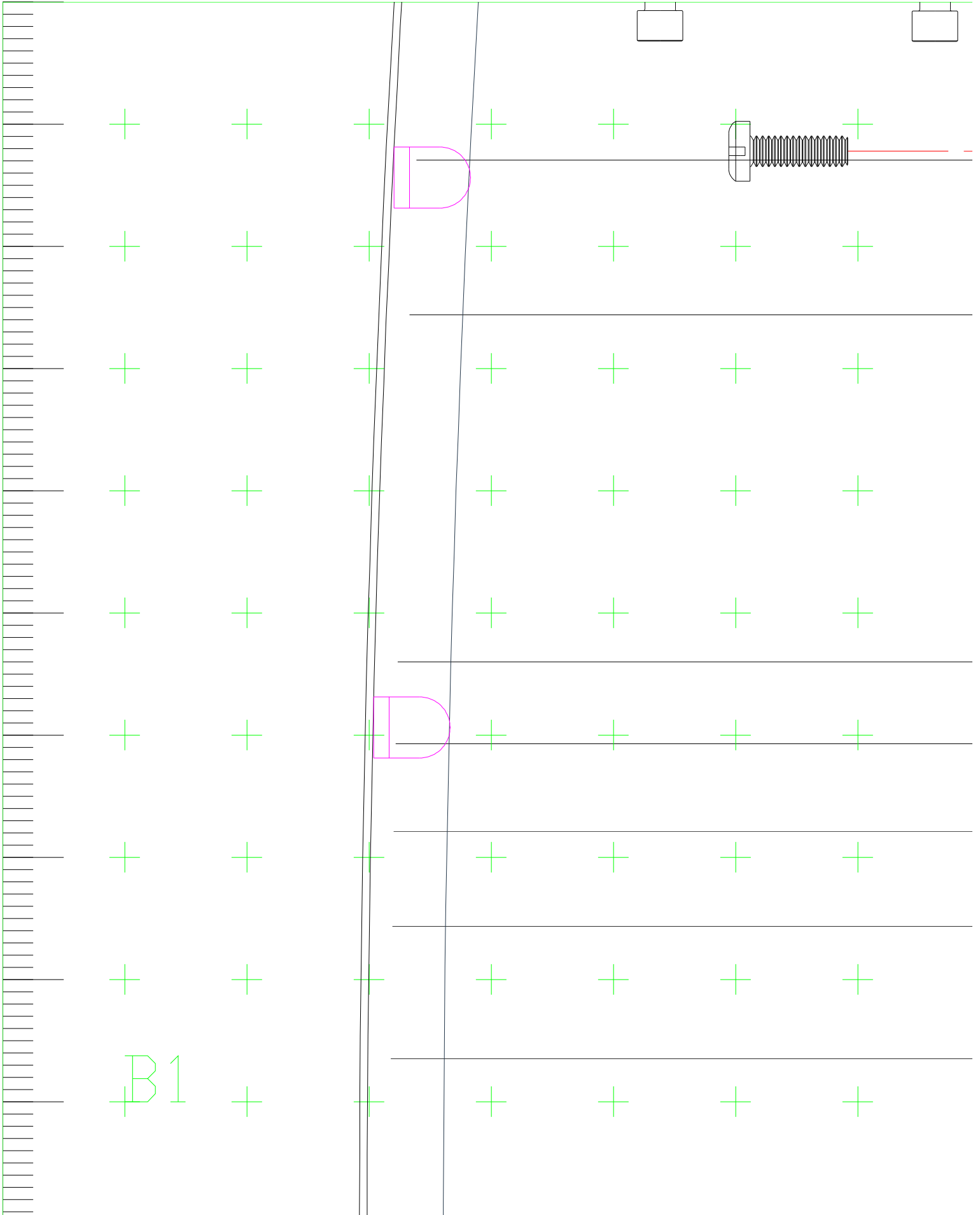


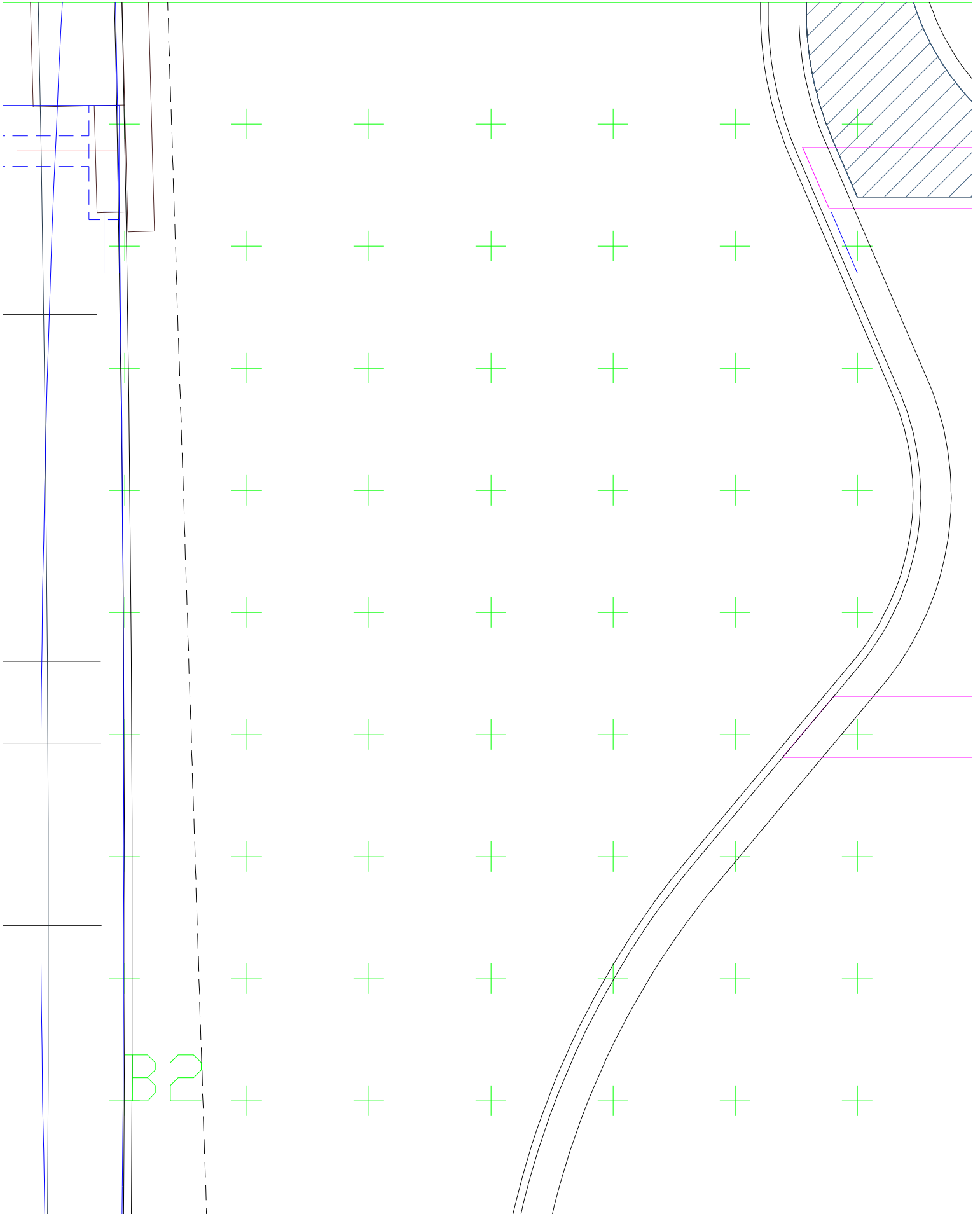


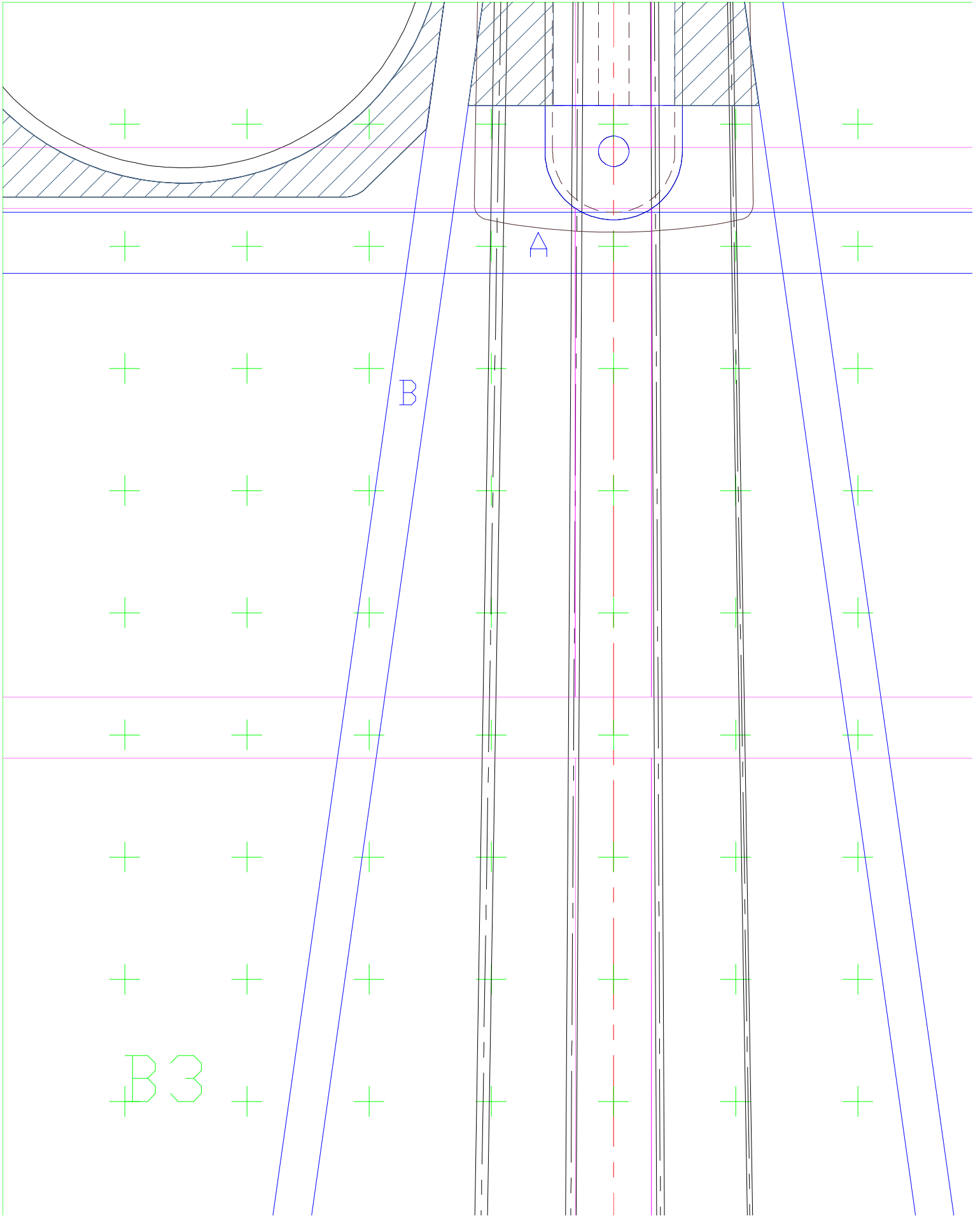


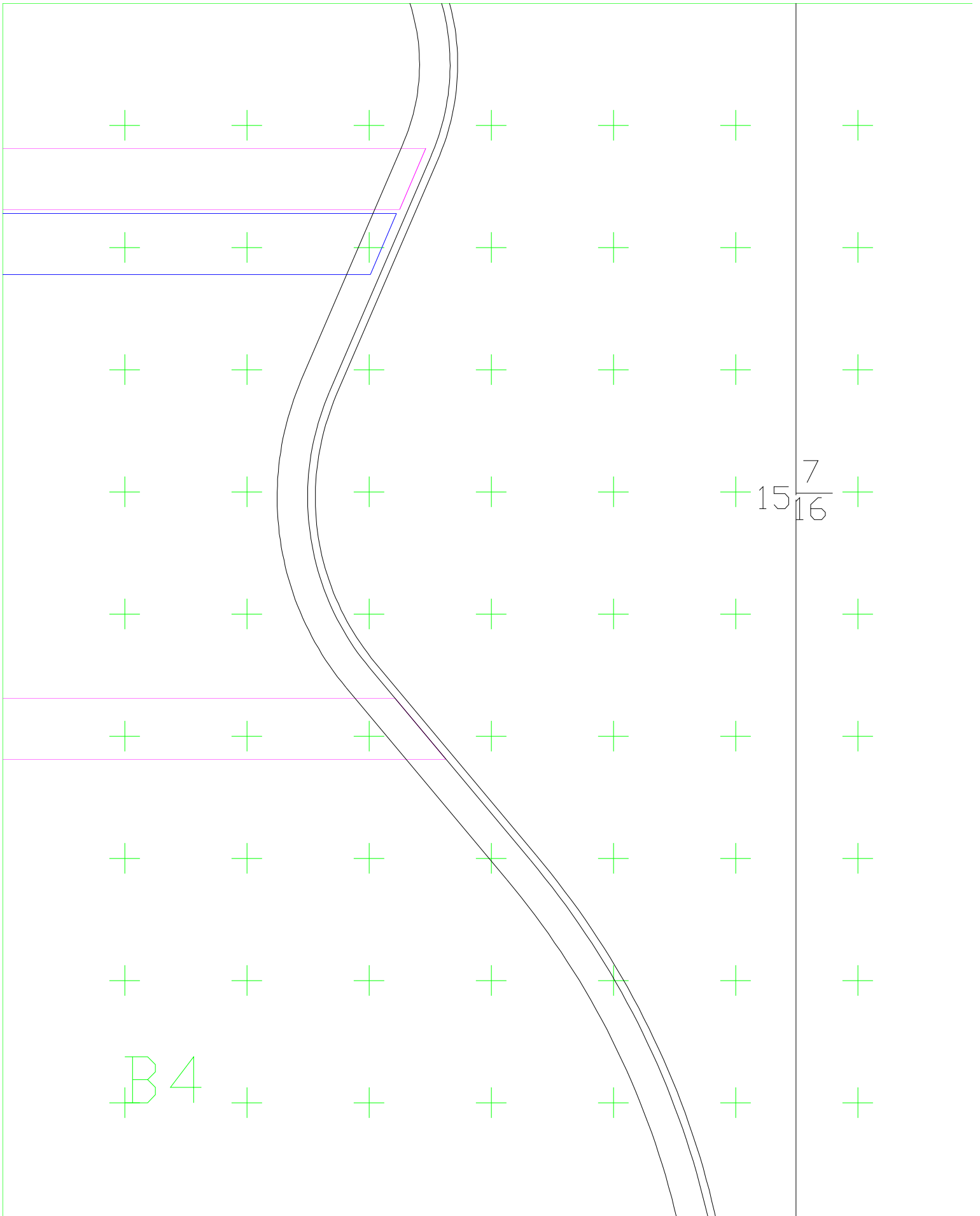












+

+

+

+

+

+

+

+

+

+

+

+

+

+

+

+

+

+

+

+

+

+

+

+

+

+

+

+

+

+

+

+

+

+

+

+

+

+

+

+

+

+

+

+

+

+

+

+

+

+

+

+

+

+

+

+

+

+

+

+

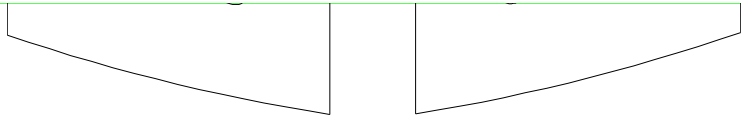
+

+

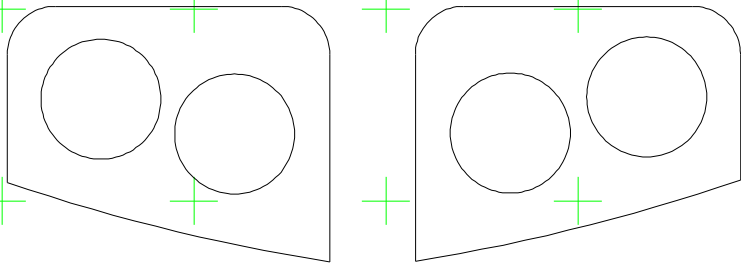
+

B4

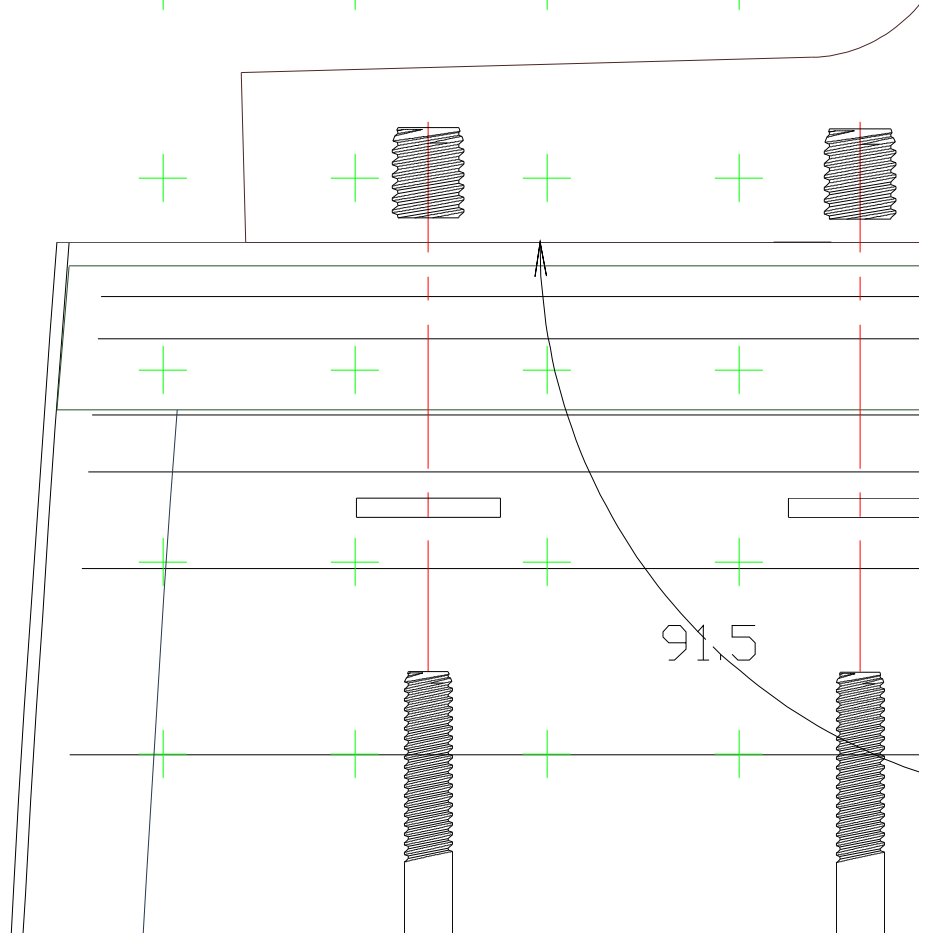
$15\frac{7}{16}$



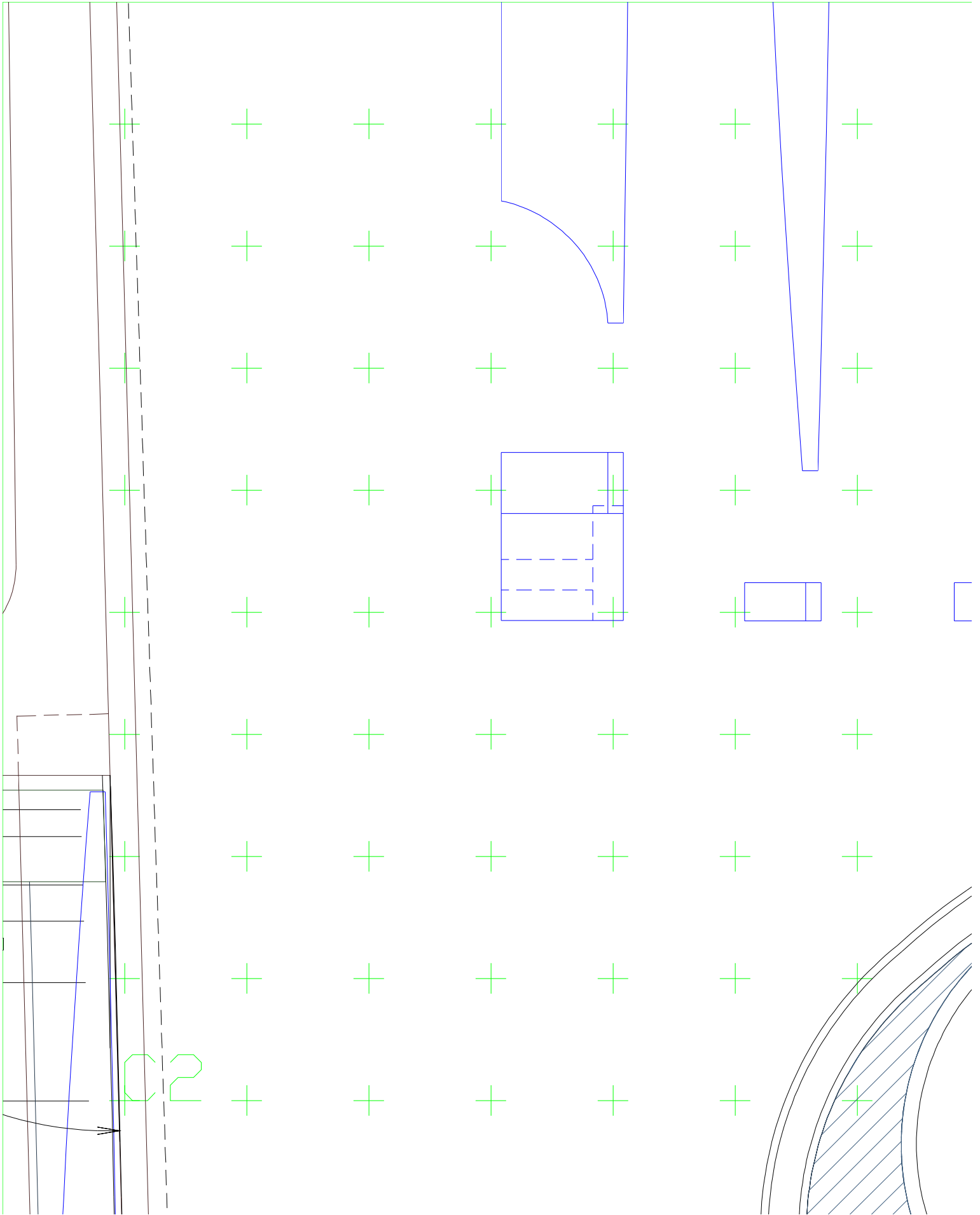
String saddles, top

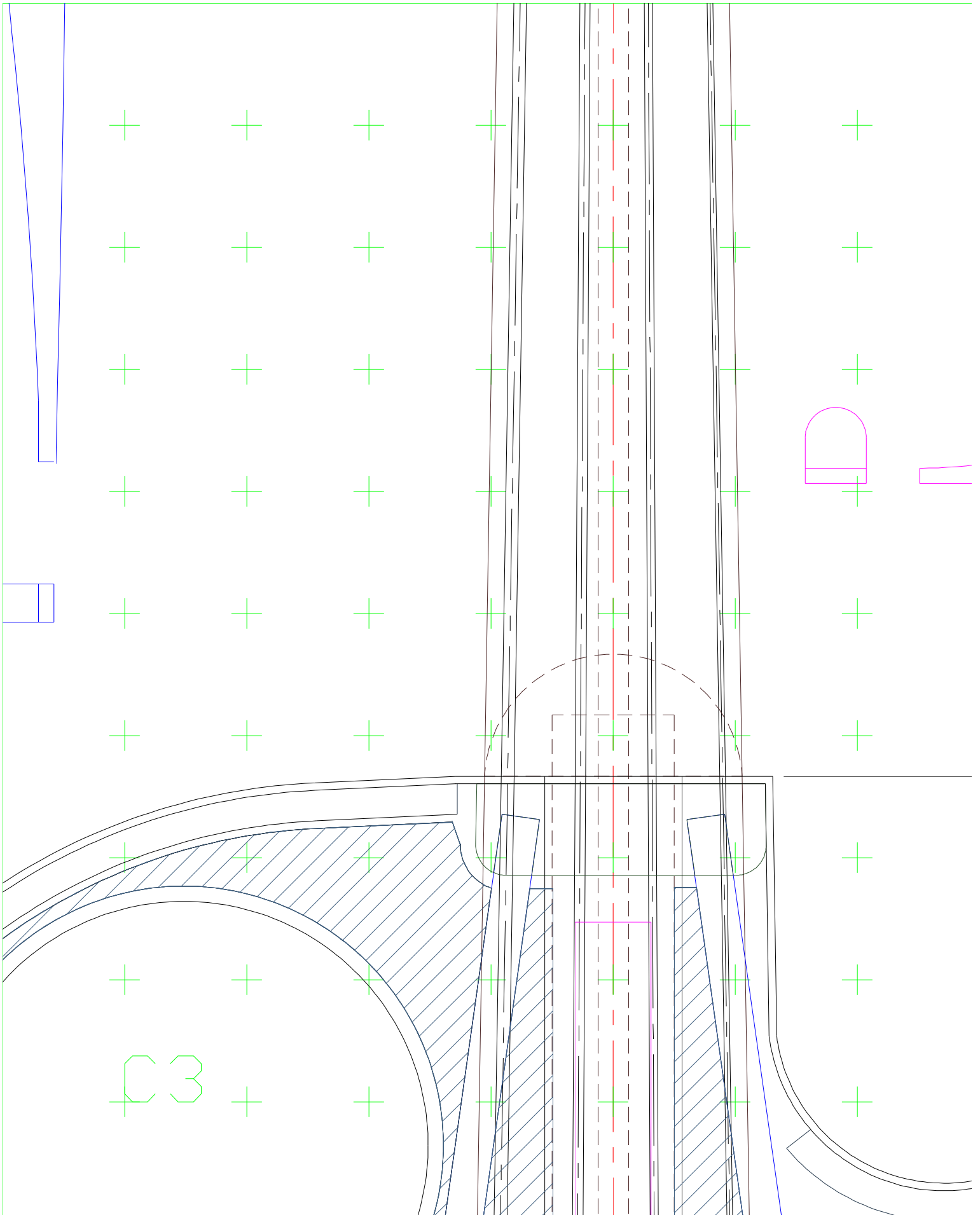


String saddles, back



C1





+ + + + + + +

+ + + + + + +

+ + + + + + +

All back  
braces

+ + + + + + +

+ + + + + + +

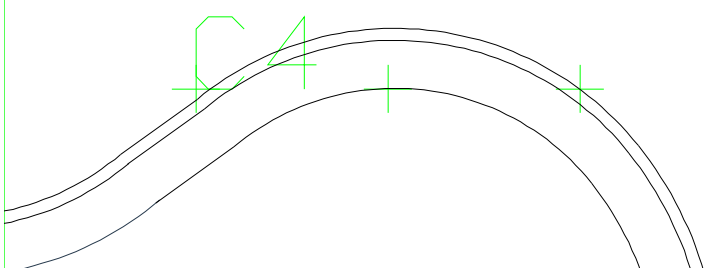
Back graft

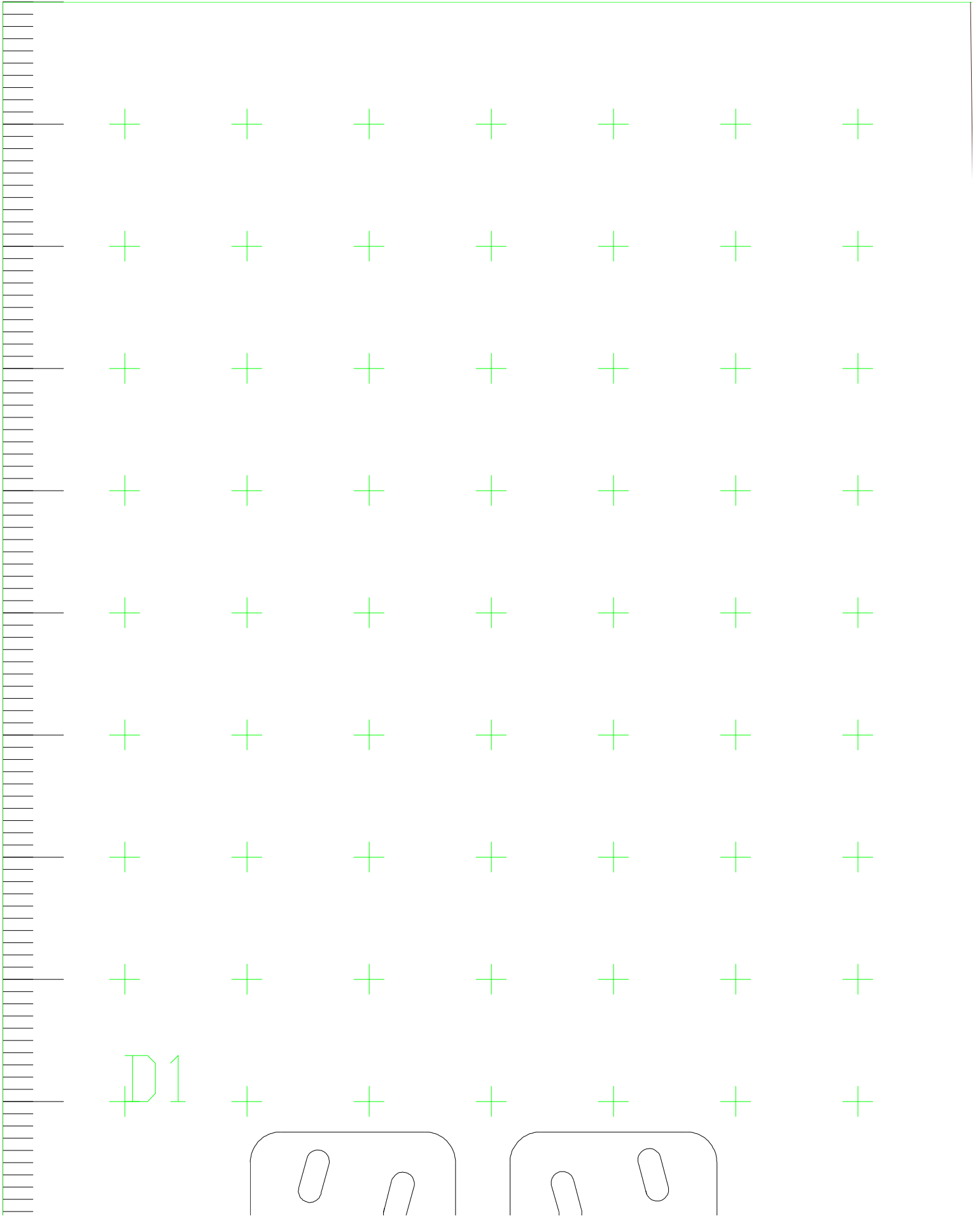
+ + + + + + +

+ + + + + + +

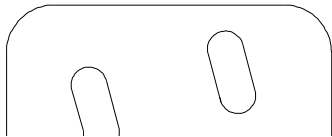
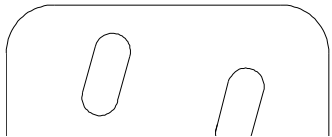
+ + + + + + +

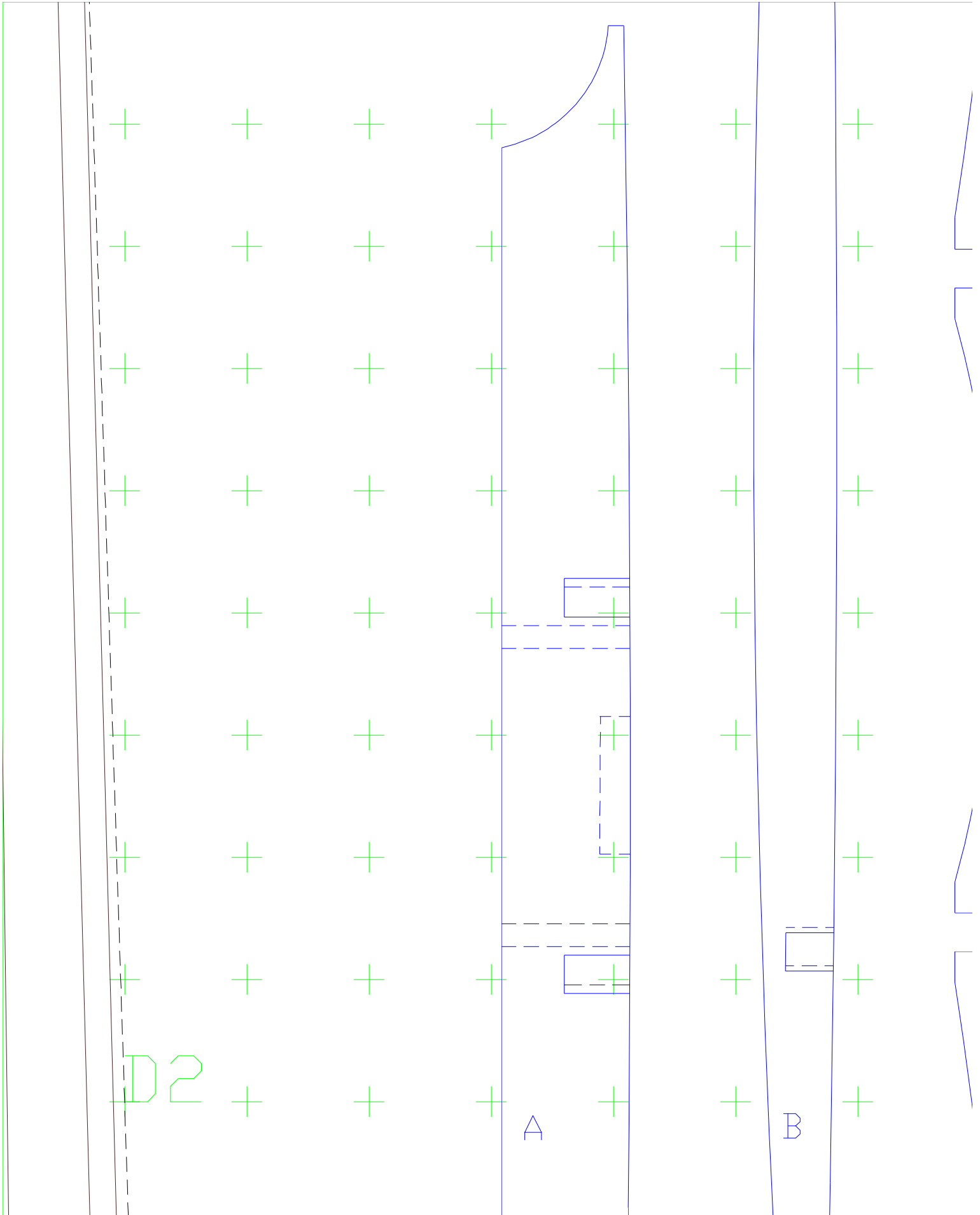
+ + + + + + +

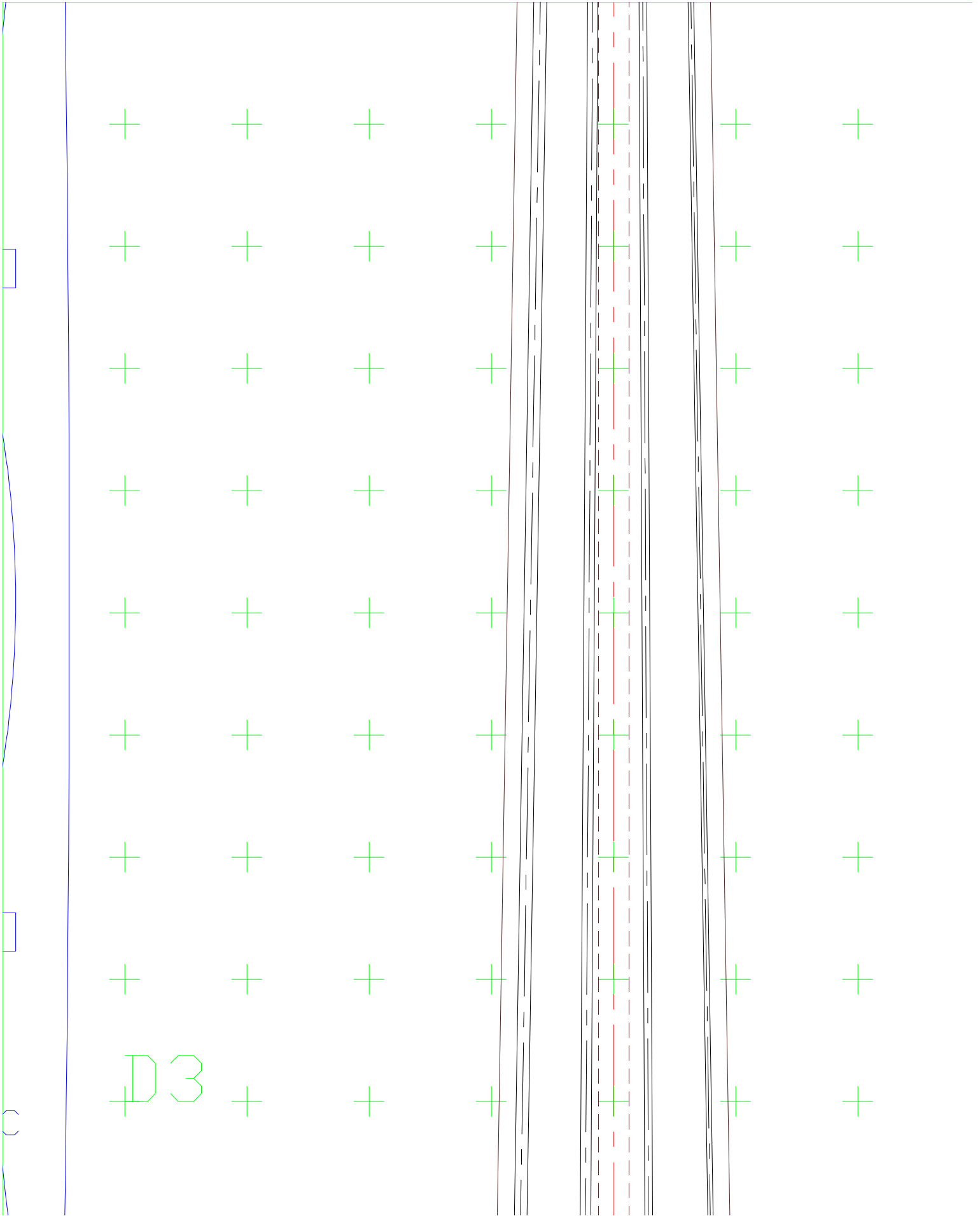




D1







the drawing plane.

+ 2. Neck uses a Stew Mac  
24" Hot Rod trussrod.

+ 3. Plates and ribs are 1.5mm to  
3mm thick. 1.5mm shown.

+ + + + + + +

+ 4. If laminated back is used  
back graft can be eliminated.

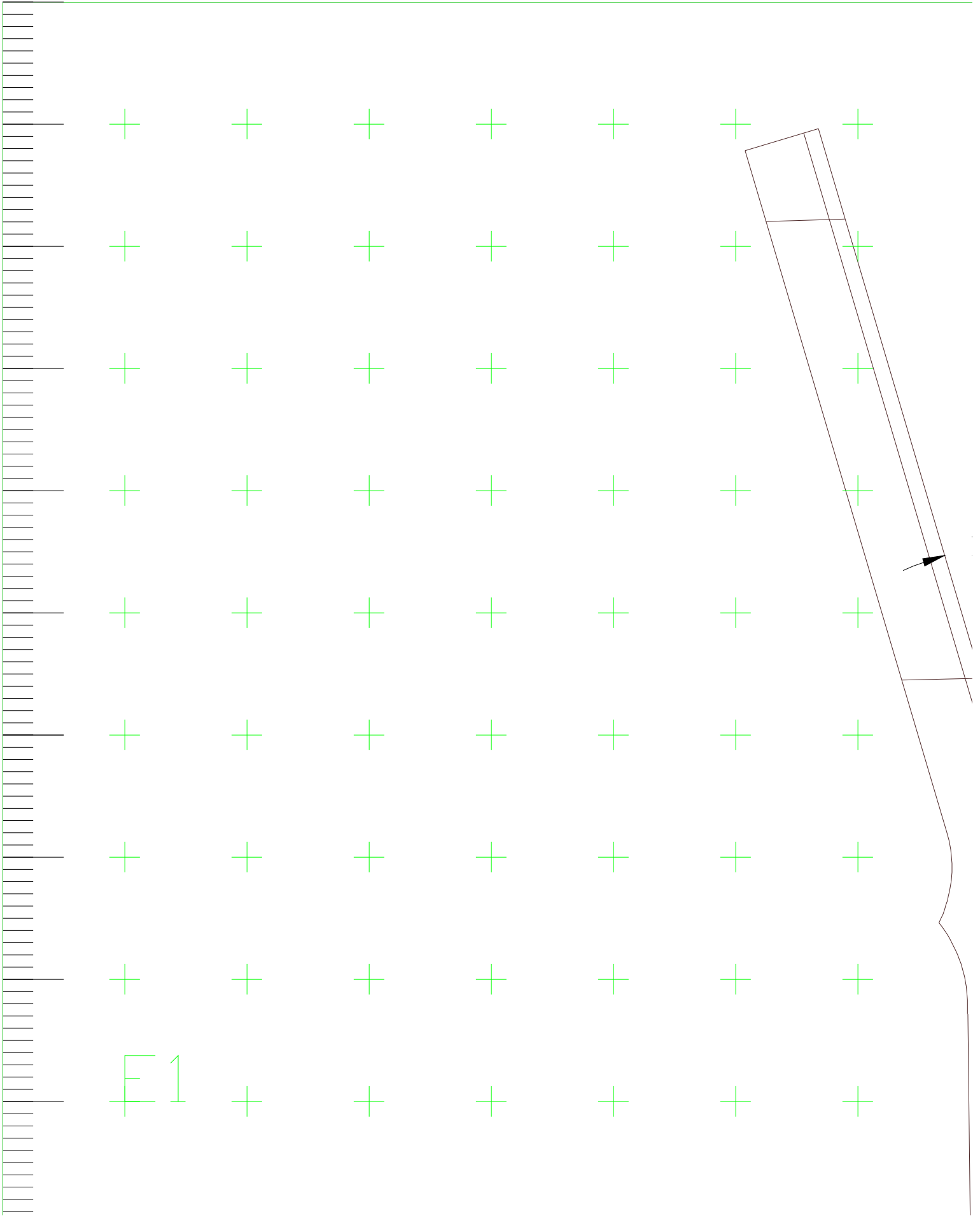
+ 5. Positions of brace notches  
are approximate.

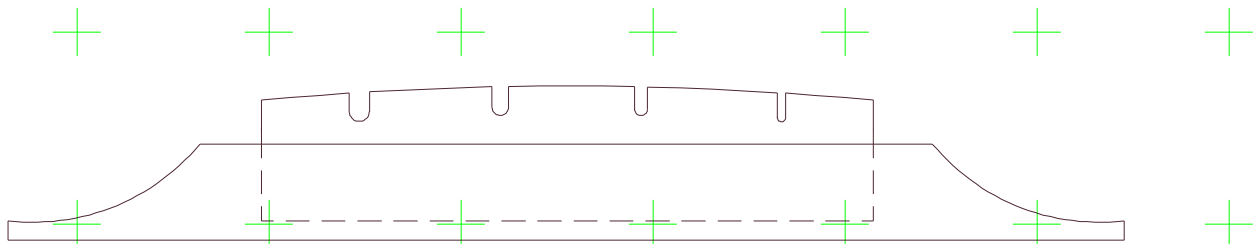
+ 6. All patches are 0.125" thick.

+ 7. Strings are 1/4 size upright  
bass strings.

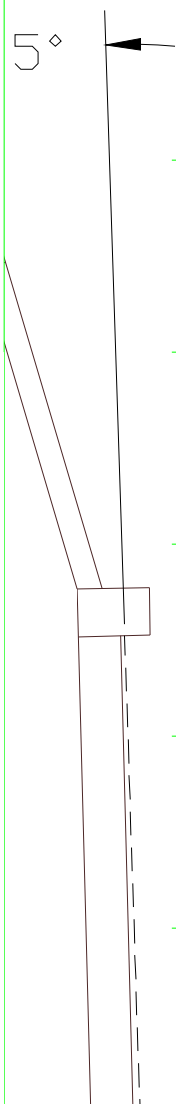
+ + + + + + +

+ D4 + + + + + + +

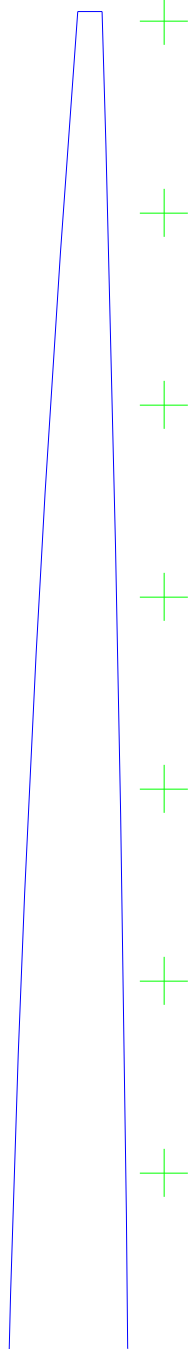


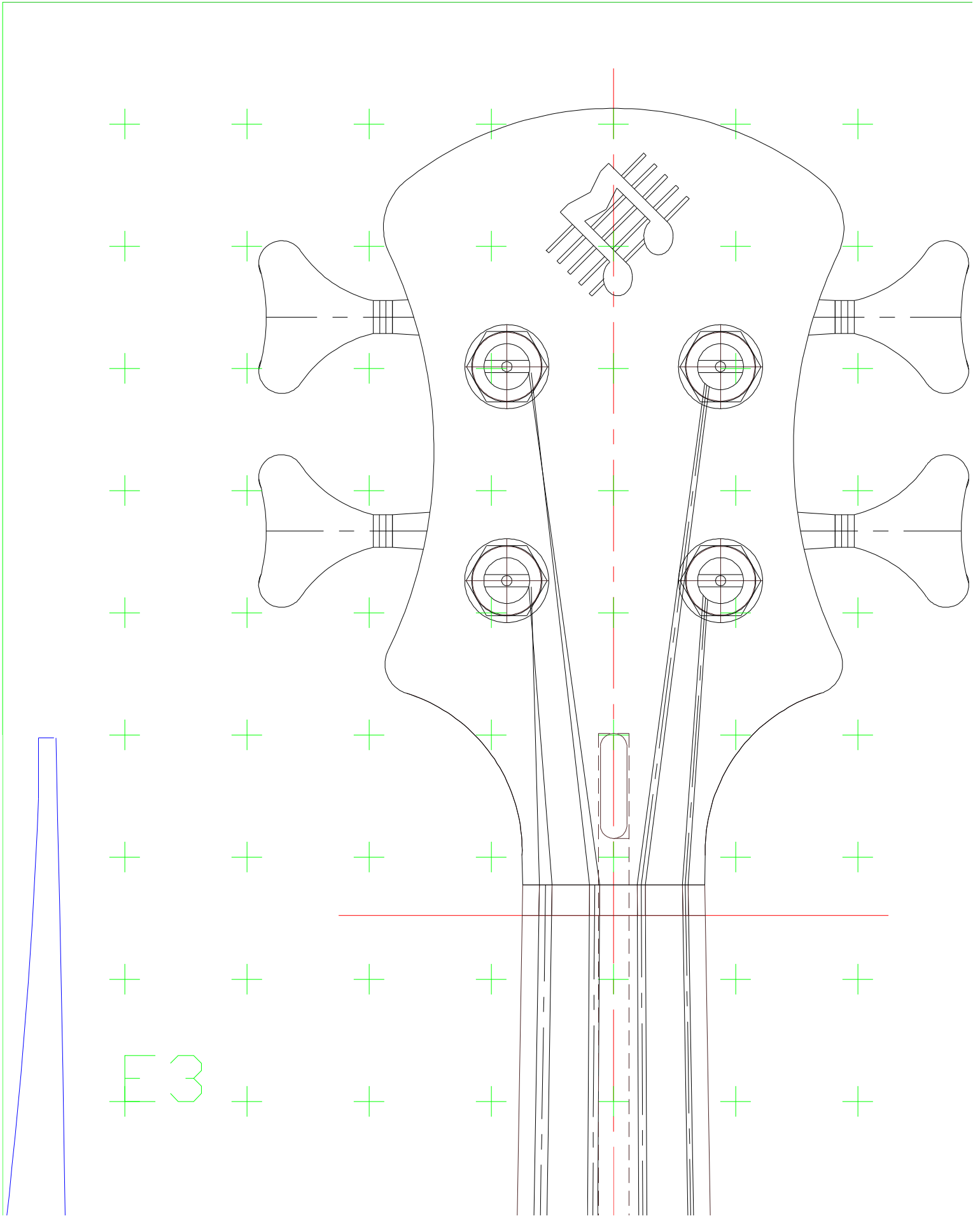


5°



F2





E3

liutaio  
**Mottola**  
 stringed instrument design

rm@LiutaioMottola.com

**Title:**

Tinozza Acoustic Bass Guitar

**Drawn by:** RMM

**Date:** 6/5/06

**Size:**

36  
 x  
 52

**Layers This Sheet:**

Blocks  
 Border  
 Neck  
 Body  
 BracesBack  
 Hardware  
 Notes  
 Logo  
 Titleblock  
 Reference Lines

Patches&Grafts  
 Strings  
 Dimensions  
 Print Grid  
 BracesTop  
 BridgeOrchStr  
 Linings

**Scale:** 1:1

**Sheet** 1 of 1

**Copyright (c) 2006 by R.M. Mottola  
 All Rights Reserved**

**This plan is made available for non-commercial  
 use only under the terms of a Creative Commons  
 License.**

NOTES

F4

1. Headstock, fingerboard, and tailpiece in top view drawing are shown as if rotated parallel to